

Mapping My Land:

*applications, tips, and tricks for landowners
that make mapping easy*

Topic 2 of 4: The “whats” and “whys” of good
mapping

July 10, 2013

James Jeuck

- Extension Associate, NCSU Extension Forestry
- Vice President, Administration, NC Tree Farm Program

jajeuck@ncsu.edu



Where are you webbing from?



What we will cover today



- **Part 1 (10 minutes): Review: Why map our land? Understanding the need for good accurate maps.**
 - How can good maps assist in fulfilling management goals?
 - How can maps helping achieve ATFS standards?
- **Part 2(65 minutes): AFF My Land Plan**
 - Overview of My Land Plan (MLP)
 - Overview of the mapping element in MLP
 - Assembling your data for map creation
 - Creating your property in MLP
 - Creating points, lines, and areas depicting your management objectives
 - Editing and saving your map

Part 1: Review - what are maps?



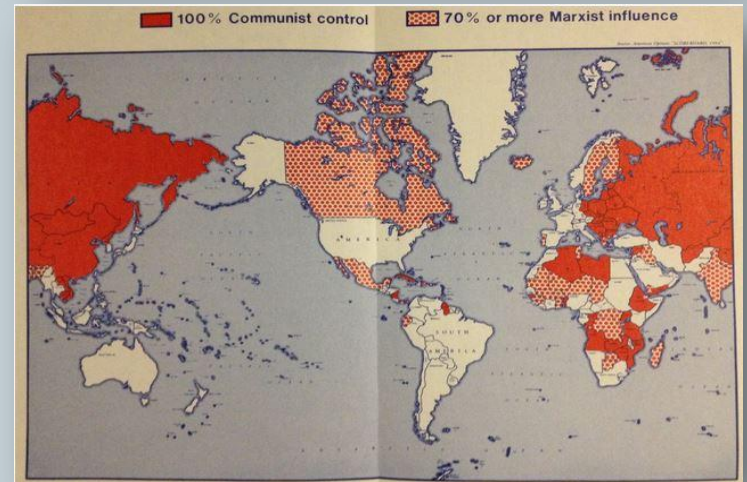
- A series of symbols conveying “spatial” information.
- Generalizations of the real world to make a point.
- A vital resource land planning tool.



<http://www.behance.net/gallery/LAND-LIVING/1466141>



http://www.timberlineforestry.com/html/plans___mapping.html



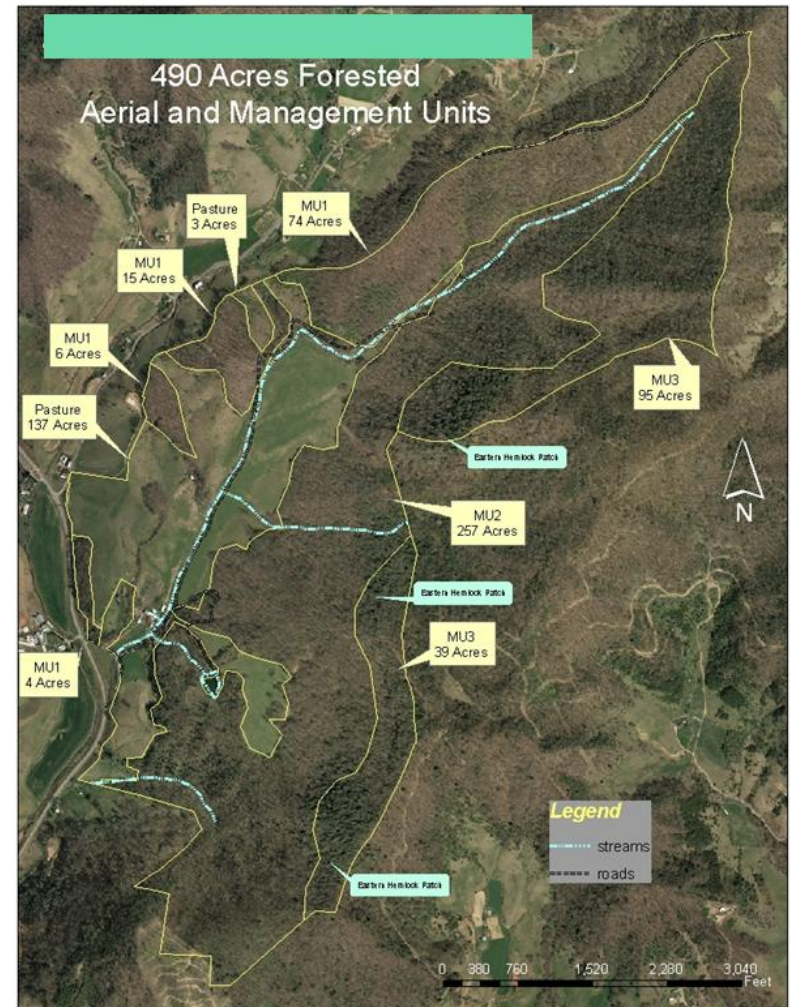
<http://blogs.brown.edu/hallhoag/2013/01/28/john-birch-society/>

What are the important elements to a good map?



A. Clear....

- A. **Theme:** Aerial and Management Unit Locations
- B. **Symbology:** more complexity
- C. **Scale:** zoomed in as close as possible (1" = 750')
- D. **Legend:** necessary

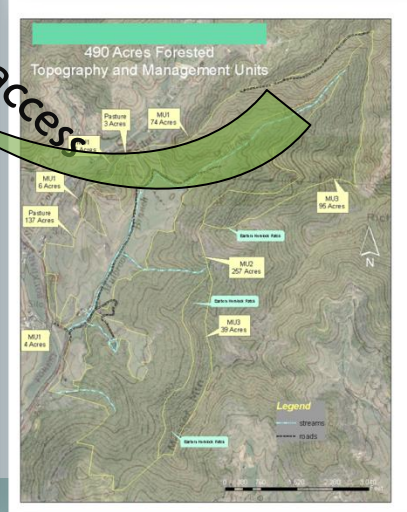
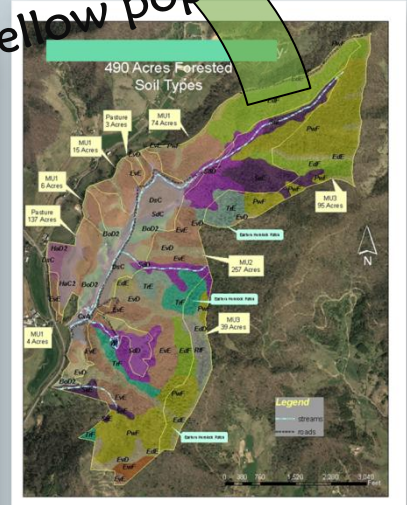
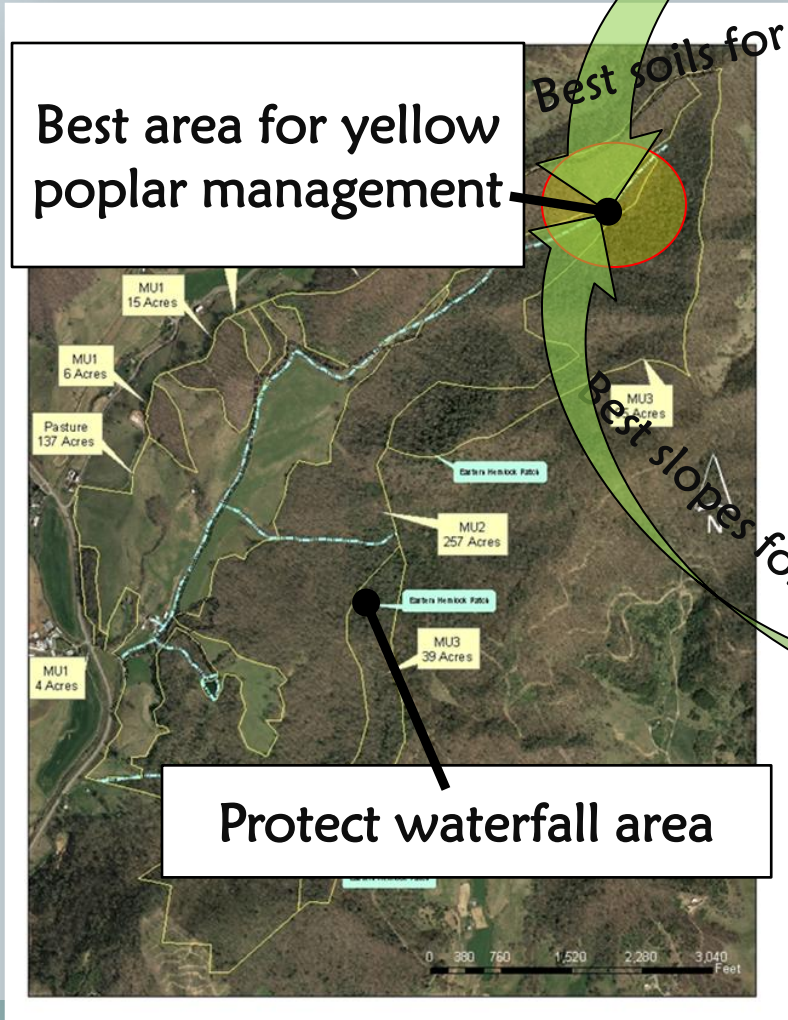


How are management objectives achieved through maps.



Planning tool that helps to identify and share with others:

- 1) Best places to do certain activities and when
- 2) Places to preserve / protect
- 3) How best to access your resources



What is the purpose of a good map?



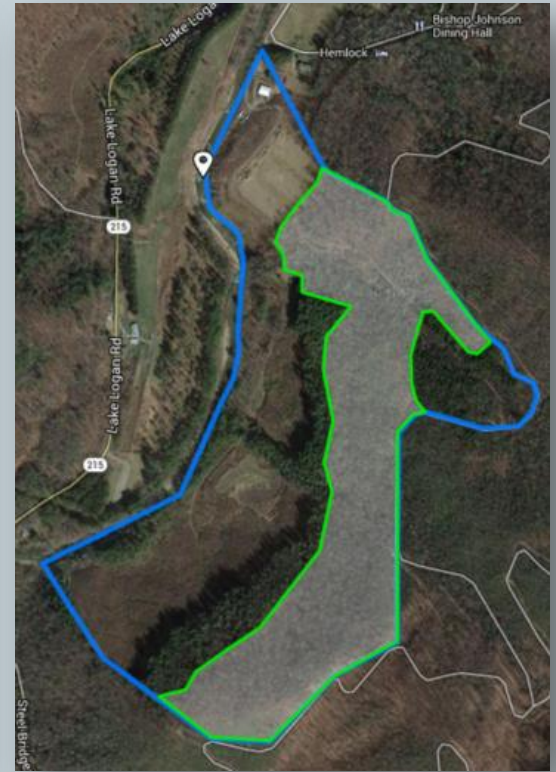
- To tell a story about your land



My favorite places



My current forest revenue



Grand-kids college fund

How can ATFS standards be met using maps?



- **Standard 1: Commitment to Practicing Sustainable Forestry**
- **Standard 2: Compliance with Laws**
- **Standard 3: Reforestation and Afforestation**
- **Standard 4: Air, Water, and Soil Protection**
- **Standard 5: Fish, Wildlife, and Biodiversity**
- **Standard 6: Forest Aesthetics**
- **Standard 7: Protect Special Sites**
- **Standard 8: Forest Product Harvests and Other Activities**

How can ATFS standards be met using maps?



- **2010 Addendum Items:**
 - Forest health
 - Soil
 - Water
 - Threatened and Endangered Species
 - Special Sites
 - Integrated Pest Management and Invasive Species
 - High Conservation Value Forests

 - **MAPS SHOULD BE EASY TO UPDATE**

Part 1 Questions



Forest Management Plan



Stormy Hollar, Haywood County, NC Forest Management Plan

Owner Name: James Jeuck, NCRF #795

Mailing Address: 3225 Grande Classic Way Cary, NC 27695

Phone Number: 828.734.9795

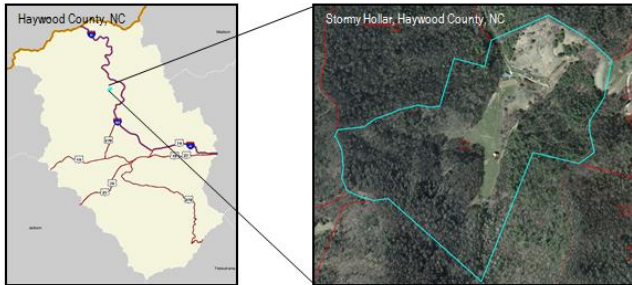
Email: jajeuck@ncsu.edu

Signature: James Jeuck

Plan Author: James Jeuck, NCRF #795

Date of Original Plan Completion: 10/10/2010 **Revision date(s):** 09/19/2013

Please note: Informal updates to the plan can be made with handwritten notes. Be sure to include a date and initial these notes throughout the management plan.



September 19, 2013

Template found at:
<http://www.treefarm-system.org/tree-farm-management-plan-templates>

Part 2: Mapping tools – AFF My Land Plan



- Overview of My Land Plan (MLP) Website
- Steps in a MLP project
 - ✦ Assembling your data for map creation
 - ✦ Creating your property map
 - ✦ Creating points, lines, and areas depicting your management objectives
 - ✦ Editing and saving your work
 - ✦ Defining your goals
 - ✦ Updating you progress
 - ✦ Sharing your dreams

My Land Plan – American Forestry Foundation



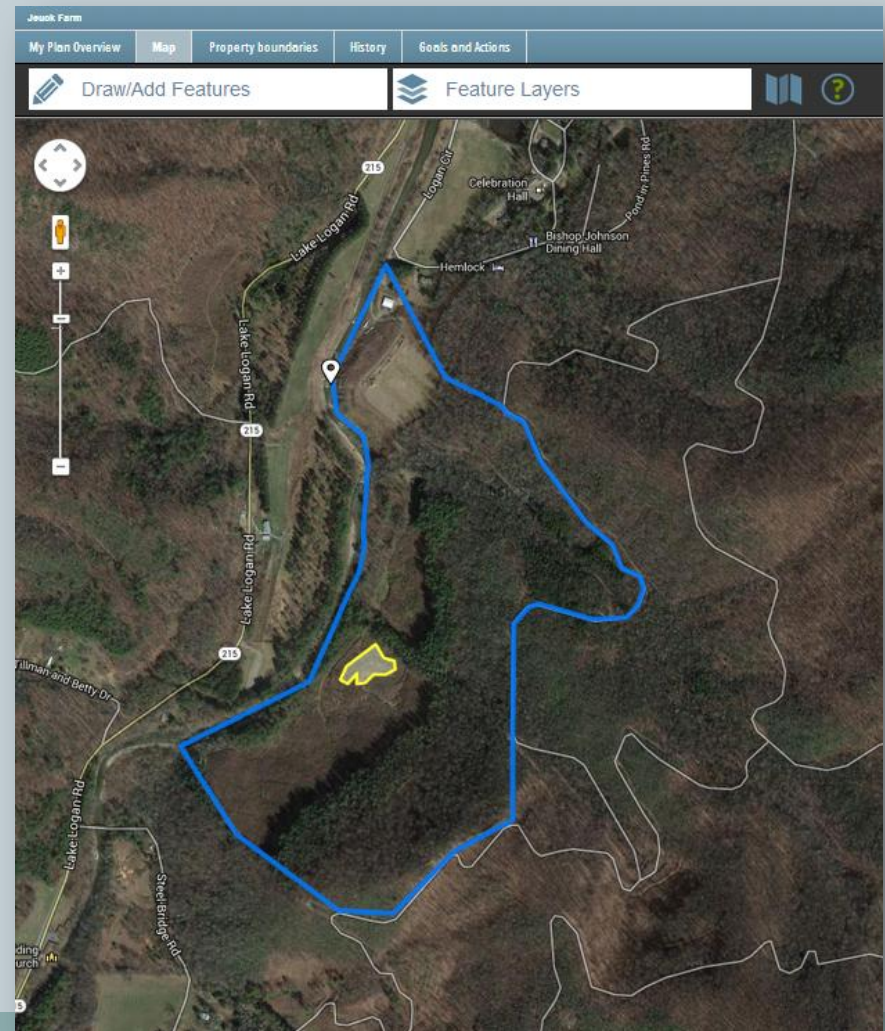
- AFF tools that help landowners:
 - Identify and explicitly state your land ownership goals
 - Explore management options and steps how to reach your land ownership goals
 - Keep a record of activities
 - Find advice from professionals
 - Share your knowledge and experiences with other landowners (peer to peer networking)

The screenshot shows the 'My Land Plan' website. At the top, there's a navigation bar with 'My Plan', 'About Us', and 'Log out'. Below that is a search bar with 'Keyword Search' and a green arrow. A dark green navigation bar contains 'What do you want to do with your land?' (highlighted), 'Enjoy it', 'Protect it', 'Make it healthy', 'Profit from it', 'Pass it on', 'Join Us', and 'My Plan'. Below this is a secondary navigation bar with 'My Land', 'My Forest Journal', 'Ask a Forester', and 'How-to Videos'. The main content area is titled 'My Plan' and is divided into three columns. The left column, 'MY PROPERTIES', shows 'JEUCK FARM' with a dropdown arrow, a satellite map, and details: 'SR 191, Bethel, NC', 'Edit property title and address', 'Delete this property', and 'Approx. acreage: 107.93'. It has buttons for 'Modify Property Boundaries' and 'Map My Land'. The middle column, 'HISTORY OF JEUCK FARM', has a text input field and an 'Add history' button. Below it is 'MY GOALS FOR JEUCK FARM' with a list of goals: 'Make it a great place to fish', 'Improve turkey hunting', 'Make it a great place to hike and camp', 'Protect from trespassing', 'Protect against pests and diseases', 'Improve water quality', 'Create a place for wildlife to thrive', 'Reduce my taxes', 'Earn income from other sources', 'Find financial assistance to do activities in my woods', and 'Earn income from timber'. The right column, 'MY FOREST JOURNAL', has a text input field and an 'Add a journal entry' button. Below it is 'THIS IS MY JOURNAL' with a 'View all >' link. At the bottom right is 'RECOMMENDED ARTICLES' with a list of articles: 'Camera Maintenance', 'Using Trail Cameras', 'Wildlife Watching Dos and Don'ts', 'Wildlife Watching', and 'Global Climate Change'. Below that is 'MY DETAILS' with 'jamez jeuck', '27695', 'Change Address', 'Email: jajeuck@ncsu.edu', and 'Change Email'.

Mapping Component of My Land Plan



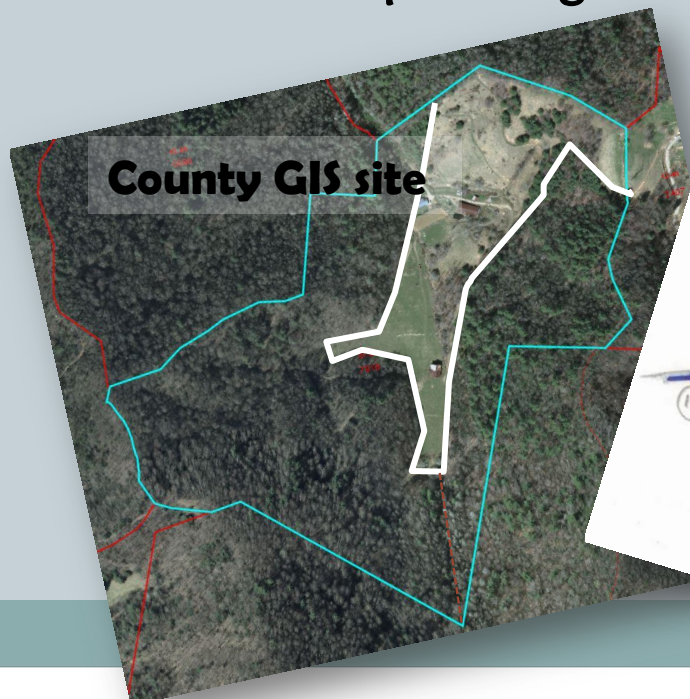
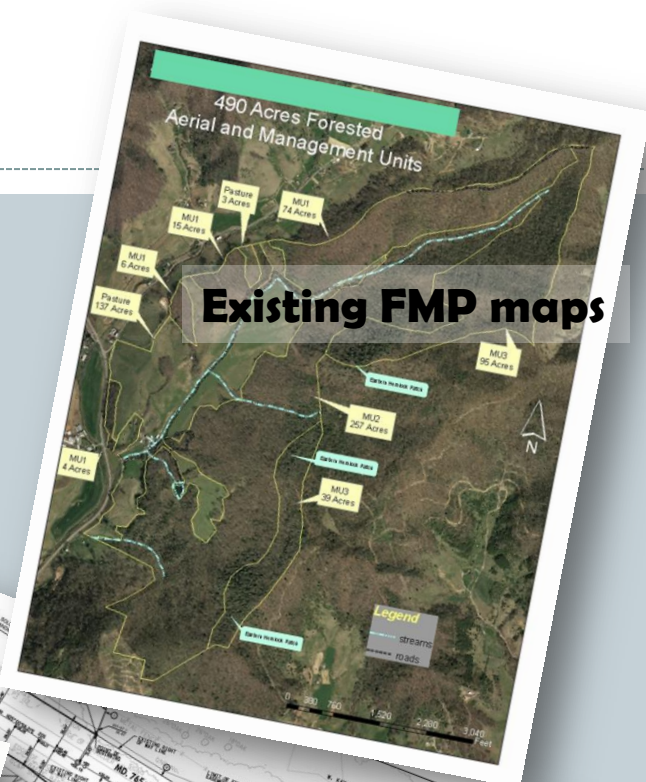
- Essential portion of MLP
- Depict areas / acreages you want to manage
- Easy to use interface
- Automatically stores all you do
- Turn on/off layers to emphasize the topic of each map
- Easy to clip out maps and paste into your hardcopy management plan document



How do I begin mapping?



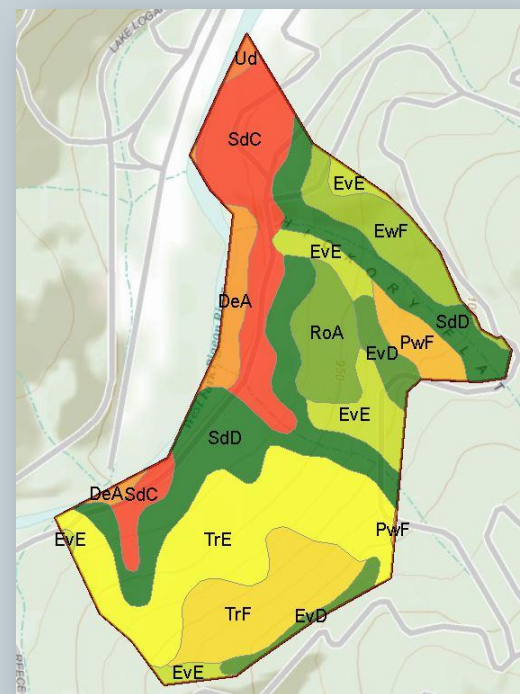
- Assemble the basic map information:
 - Property boundary (parcel map)
 - Depictions of management units from:
 - ✦ current forest management plan
 - ✦ desired land ownership goals
 - Soils – nice planning tool



Other data that can be useful: SOILS



- Soils are most important – informs you of what the potential for forest growth and limitations.
- Sources:
 - Hardcopy of the NRCS County Soil Survey, found at:
 - ✦ NRCS Office
 - ✦ Your county library.
 - ✦ Online versions found at http://soils.usda.gov/survey/printed_surveys/
 - Web Soil Survey - Official USDA soil information as viewable maps and tables for more than 2300 soil surveys:
 - ✦ <http://websoilsurvey.nrcs.usda.gov/app/HomePage.htm>
 - County GIS and Mapping Site



Other data that can be useful: TOPOGRAPHY



- Soils and water are tied to the topography, affecting access and disturbance limitations
- Hardcopy Sources:
 - County mapping office
 - County library
 - Order online from USGS store (<http://store.usgs.gov>)
- Online sources:
 - Free topo map download (<http://store.usgs.gov>)



My Land Plan Demo



Show of hands:
How many have used
My Land Plan?

My Land Plan Demo



Off we go!!

Recap of MLP



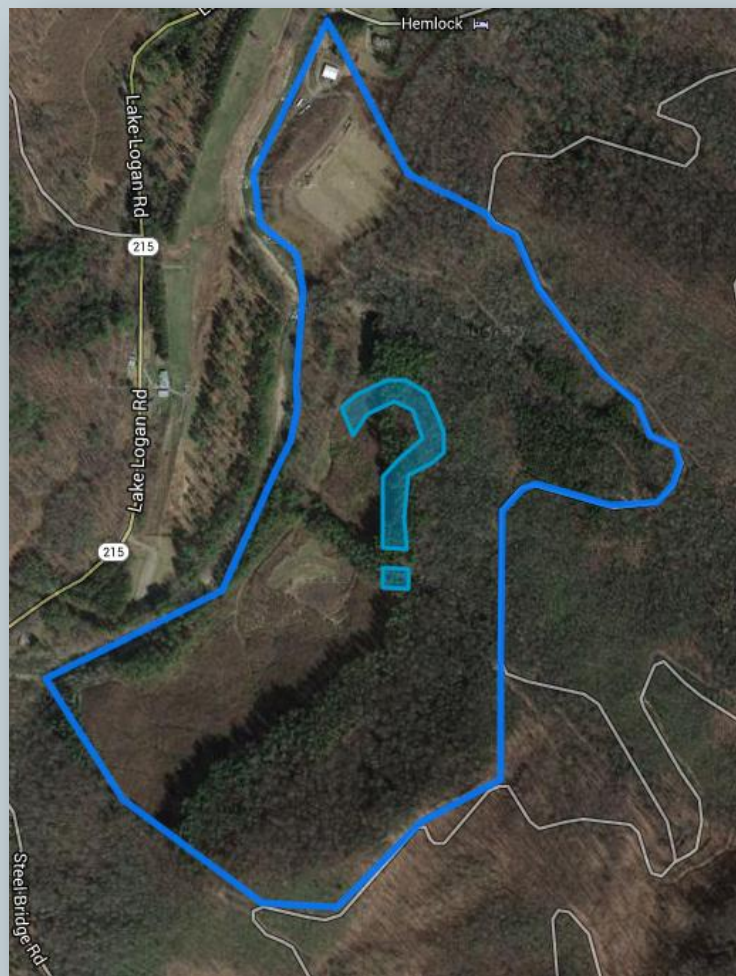
- What we covered - MAPPING
 - Creating your property
 - Adding and editing points, lines, and areas of interest in your property
 - Editing colors, names and descriptions of your property features – remember to use `
` for a new line
 - Adding a scale bar
 - Using your clipping tool to clip your map to paste into a word document

Recap of MLP



- What we covered – GOALS, HISTORY, AND LOGGING
 - Setting major goals and objectives to achieve your wishes on your property
 - Updating your goals as you achieve them
 - Developing your history and storing important documents in one place
 - Entering logs for your property along with pictures that help tell the story of your property for friends and family

Part 2 Questions



Mapping My Land:

applications, tips, and tricks for landowners that make mapping easy

Topic 3 of 4: Data Sources for My Land Plan – details of online data resources: County GIS, Web Soil Survey, Natural Heritage. How you can extract the information most important to your management. 10/3/2013 1:00PM

Topic 4 of 4: Leveraging the power of Google Earth – Not only a great application for exploring the world, Google Earth can be powerful tool in mapping your land. This topic will cover the basic elements of Google Earth, how to create and store new project data, and how to share your data with others. A must for the landowner wanting to get the most out of mapping your land. 10/17/2013 1:00PM

James Jeuck, NCSU
jajeuck@ncsu.edu

