



Joseph M. Stehling Jr.
Chairman,
NM Tree Farm Committee

HC 70 Box 109
Ocate, NM 87734

(575)-377-0546

joestehling@earthlink.net

www.nmtreefarmers.org

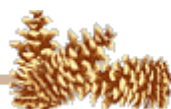
September 2011



ATFS 2011 NATIONAL TREE FARMER CONVENTION

The American Tree Farm System 2011 National Tree Farmer Convention was a HUGE success. New Mexico tree farmers, foresters, and the New Mexico Tree Farm Committee hosted the annual National American Tree Farm System Convention at the Tamaya Resort on the Santa Ana Pueblo 9 - 11 August, 2011. Charlie Wicklund, our Treasurer, chaired the convention committee and did a terrific job herding all the cats. The convention was attended by approximately 310 tree farmers and their families from 38 states. The convention began with a superb heavy hors d'oeuvre "Meet and greet" reception where tree farmers were able to get to know each other and discuss common issues. Each evening, the Outdoor Underwriters insurance company sponsored a hospitality suite where attendees could further their discussions over a complimentary beer or two. Several of our committee members (names withheld to protect the guilty) held a LOT of discussions in the hospitality suite.

The second day consisted of several concurrent sessions such as "Cameras and Critters" – how to set up wildlife cameras for the best photos (this was my favorite); "Certification System for Family Forest Owners"; "Spreading the Seeds about the Benefits of Becoming a Certified Tree Farmer"; "Chain Saw Safety and Maintenance"; "What Women Want in Working the Land"; "Benefits of the Farm Bill for Tree Farmers"; plus several other interesting presentations. In an effort to engage the younger generation and foster a family legacy, a youth program was included again this year with the help of AFF's environmental education program-Project Learning Tree (PLT). About 15 youth (ages 5-18) registered to attend. While parents and grandparents attended various convention events, their children and grandchildren joined Mary Stuever, Barbara Garrity, Jean Szymanski and Dan Ware, (all of New Mexico PLT) for a day of PLT activities, a short hike in the Bosque and time to cool off in the pool. The day ended by engaging the youth in an activity from the Bosque Education Guide, where they learned about the Rio Grande ecosystem, through time. The following evening began with a youth banquet, followed by a traditional Native American pottery class and fireside constellation storytelling, complete with s' mores. The students in this photo are learning the Spanish names for tree parts in PLT Activity 62: To Be a Tree.

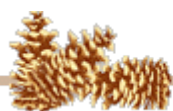


The third day was a Field Day at Shirley and Bob Sallach's Starfire Tree Farm near Tijeras. Todd Haines, Bernalillo District Forester set up a fantastic series of stations that demonstrated such things as erosion control, chainsaw carving, tree climbing, insects and disease, seedling planting, falconing, birding, plus several others. The Sallach's Tree Farm has one of the seven demonstration forests in New Mexico that demonstrates the tree farm mantra of Wood, Water, Recreation, and Wildlife. At noon a fabulous bar-b-que lunch was served with corn on the cob, tater salad, chicken, sausage, and beef plus all the chocolate chip cookies you could eat.



Over 300 tree farmers from 38 states enjoyed a bar-b-que lunch at the Starfire Tree Farm Field Day.

Todd and his group of talented volunteers did a marvelous job on setting everything up in spite of having to fight wildfires for much of the season. Todd deserves accolades as he also developed a convention logo that was both artistic and attractive. Shirts with the logo were sold out so quickly that more had to be ordered on an emergency basis. At our next quarterly tree farmer meeting on 07 September we will have order blanks if anyone wishes to order a shirt. All during the convention Deb Thrall of Project Learning Tree (PLT) with assistance from other states' PLT coordinators set up an outstanding silent auction that raised funds for our depleted treasury. Arnie Friedt, Forester with the Cimarron District put in a lot of time and effort setting up nine optional tours for attendees. This was a herculean task. Arnie and his team of tour guides worked very hard on these tours. I received numerous laudatory comments on all the tours taken. Some said the tours made the convention worthwhile. I also received uncountable compliments on how the entire convention and field day were set up and run. A hearty round of thanks goes to Amy Yambor and Liz Sandler of the national office for selecting New Mexico and doing all the leg work on the administrative end of the convention. They did a truly wonderful job. I would like to thank all the folks not mentioned above, too many to mention, who set up and guided the tours and assisted in setting up and working all the field day



events. They did a tremendous amount of work. I would like to have seen more of our New Mexico members attending to take advantage of the events and networking.

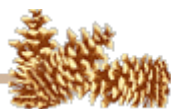


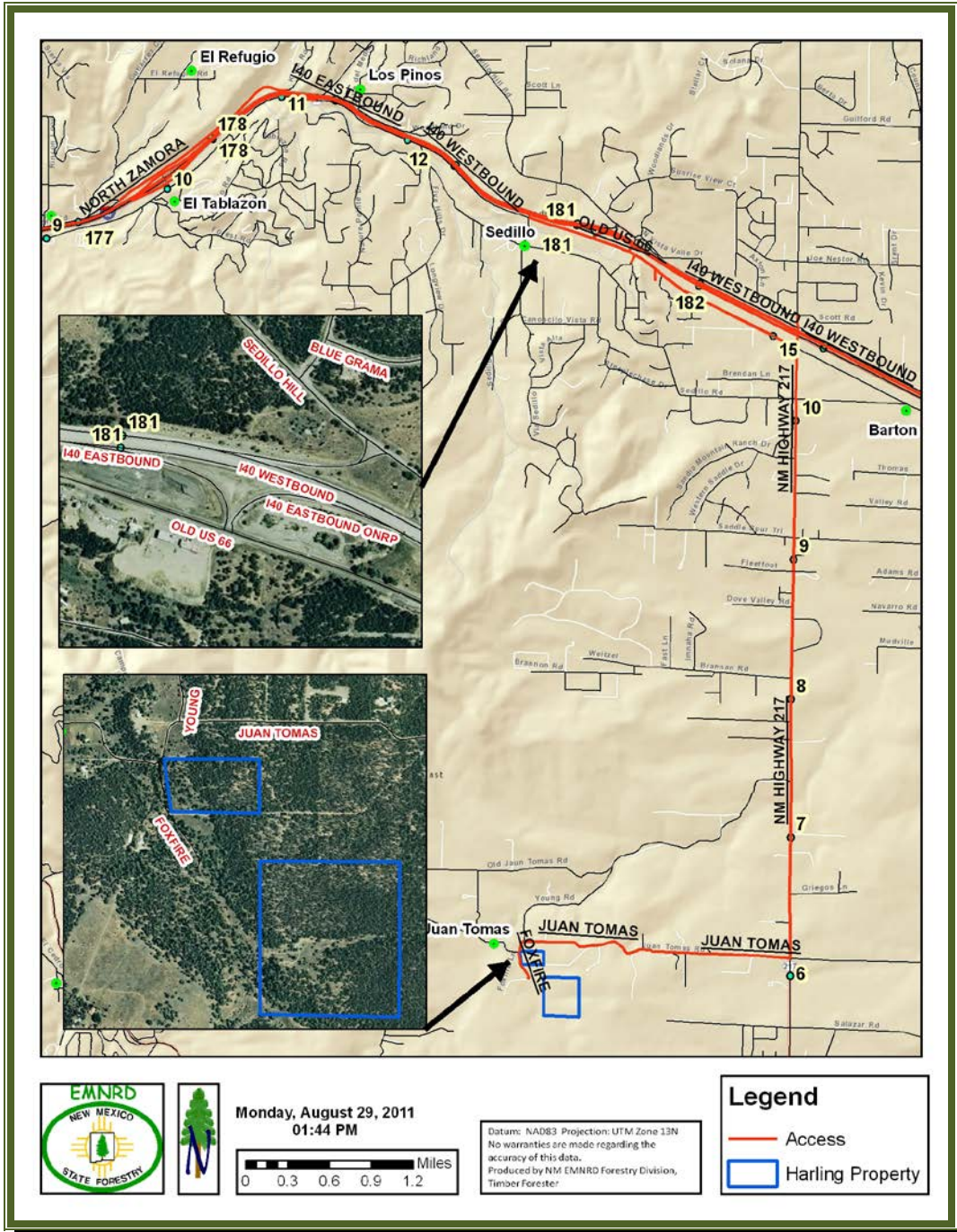
From left to right: Todd Haines (Bernalillo District Forester), Charlie Wicklund (Committee Treasurer), Joe Stehling (Committee Chairman), Doug Boykin (Socorro District Forester), Arnie Friedt (Cimarron Forester), Deb Stephan (Backyard Tree Farmer), Nick Smokovich (Socorro Forester) and Bob Sallach (Owner of Starfire Tree Farm).

FIELD DAY CAPACITY BUILDING GRANT September 24, 2011 (9:30am – 3:00pm)

Based on the results of the Capacity Building Grant Survey distributed earlier this year, we are planning on having a Field Day on 24 September at the Harlan Tree Farm. The location of the field day was based on the largest number of survey respondents being from the Bernalillo District. We will start the meeting at 9:30am. This is intended to be a get together of landowners to compare notes and discuss concerns. In the morning we will discuss the tree farm program, re-inspections needed, problems with your farms, find out what you think about the program, suggestions for future field days. We want to hear from you. Following a complimentary lunch we will have a class on chainsaw maintenance and safety and take a tour of Harlan's Tree Farm. I look forward to seeing as many of you as possible at this event. **If you can make it please RSVP (Joe Stehling, information provided above) by September 20, 2011 so we know how many to expect for lunch.**

Directions as follows: Take I-40 East from Albuquerque to the Sedillo exit at the top of the hill, go East on frontage road to State Road 217, go South to Juan Thomas Road turn West at the old church that is Foxfire Road turn South. The Harlan Tree Farm is the first gate on the left.





On another issue: We are attempting to reduce our costs (our treasury was down to about a hundred bucks just prior to the convention). Please send to me your e-mail address so we may send the monthly bulletin to those with an e-mail address. Even if you prefer a hard copy mailed, please send to me your e-mail so I can remind you of upcoming events. Ignore any Spam notice if you put Tree Farm in the address line. I will get the message. Also, please put on your calendars the quarterly meeting of the Tree Farm committee in Albuquerque the second Wednesday of the first month of each quarter, except for this September when it is the first Wednesday. *Joe Stehling, Committee Chairman*

