



MATTHEW SILVA
Chairman,
NM Tree Farm Committee

9204 Camino Del Sol, NE
Albuquerque, NM 87111
505-270-0339

matthewksilva@msn.com
www.treefarmssystem.org/new-mexico

August 2018



TREE FARM BULLETIN

NEW MEXICO TREE FARM PROGRAM FALL FIELD DAY

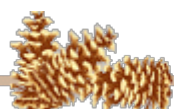
September 29th, 2018 (10:00 AM to 2:30 PM)

The New Mexico Tree Farm Committee is pleased to announce that Rancho del Oso Pardo have been selected as the 2017 Outstanding Tree Farmer of the Year for New Mexico. An Outstanding Tree Farmer of the Year award is given to a Tree Farmer in recognition of their accomplishments on the ground and within the outreach and education realm.

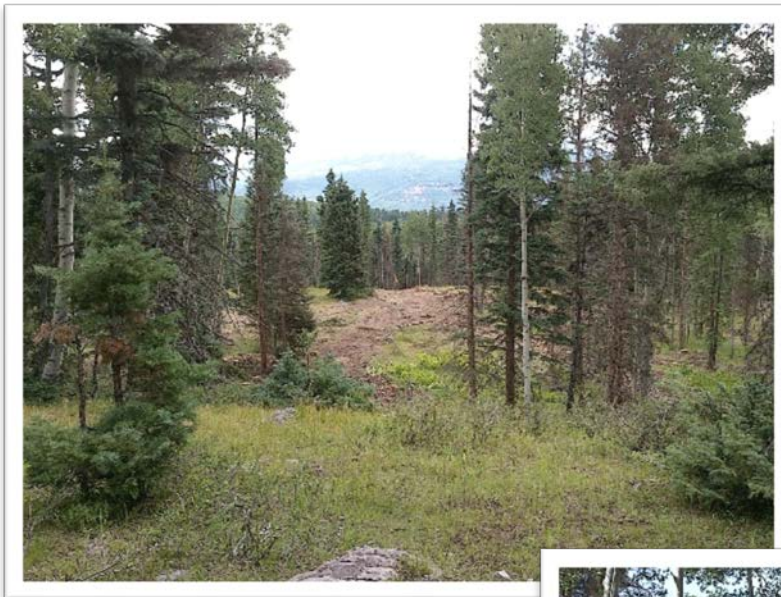
Come join us in northern New Mexico for some high elevation fun for the 2018 New Mexico Tree Farm Program Fall Field Day! Located 6 miles north of Chama, NM on State Highway 17. This year's introduction to our fall colors is Rancho del Oso Pardo (RDOP). Roughly translated "Brown Bear Ranch", though no true Brown Bears (aka Grizzly Bears) exist in the southwest, we have plenty of brown or cinnamon - Black Bears in the area.

"RDOP was originally part of the T.A. Land Grant; [this] area was divided into several ranches. The present owners have, over time, bought ranches or portions thereof to create the ranch of today. The ranch is primarily a recreational area for owners and guests. [Past] grazing and logging...was done with little concern for best management practices or ecosystem functions. At this time, the owners, being concerned and conscientious land stewards, are interested in rectifying some of these past land abuses, restoring a more ecologically balanced land base and preventing any catastrophic wildfire or damage to the Chama River watershed..." –Excerpt from RDOP Forest Management Plan; Gary Harris, Forestry Services of Chama.

RDOP straddles the New Mexico/Colorado state line with 5,522 acres on the New Mexico side and the remaining 13,000 acres in Colorado. Low areas start at 8,300 feet and rise above timberline at over 11,000 feet in elevation. This area has a history of high grade logging and overgrazing by sheep and cattle associated with the lifestyle at the time. The southern spur of the Denver and Rio Grande Railroad came down from Alamosa Colorado through Chama and northwest to Durango. This brought about the demand for timber for home building, the railroad, and for the local coal mines as support timbers in the mine shafts. Ranchers utilized this transportation resource to deliver livestock to



various markets outside the area. The Cumbres and Toltec Scenic Railroad, a remnant of that long-lost spur, travels through RDOP today carrying tourists and train enthusiasts from all over.



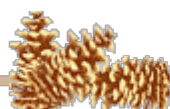
Taking a cue from past management, RDOP has developed forest management strategies in the mixed conifer and aspen forest types that complement the landscape. Ever evolving and adapting to changing conditions and seasons, several practices will be seen during the site tours. Information sharing is the key to drawing you up to Chama and is the primary goal of the ranch manager in hosting the 2018 Fall Tree Farm Field Day.

Agenda as with forest management in northern New Mexico is subject to change based on weather, but here is as close as we can get. There is also the phenomenon called “Chama Time”, but if you are hard pressed, just let us know ahead of time and we can accommodate a timely departure if needed. Come prepared for cool weather, or just some wonderful warm sunshine!!



Saturday September 29, 2018

- 10:00 AM Visitor sign in, Welcome, & Introductions – RDOP Headquarters
- 10:30/10:45 AM Ranch presentation on high elevation management strategies, landscape management across fences, and field site overview.
- 11:15/11:30 AM Depart for field visits (transportation will be provided by RDOP and NMSF via 4x4 vehicles)
- 12:30'ish PM Lunch (lunch provided by NM Tree Farm Committee; there will be shelter and outhouse available)
- 1:15 PM Continue to the next two field sites.
- 2:00/2:30 PM End of Tour: Begin return to RDOP headquarters for departure.

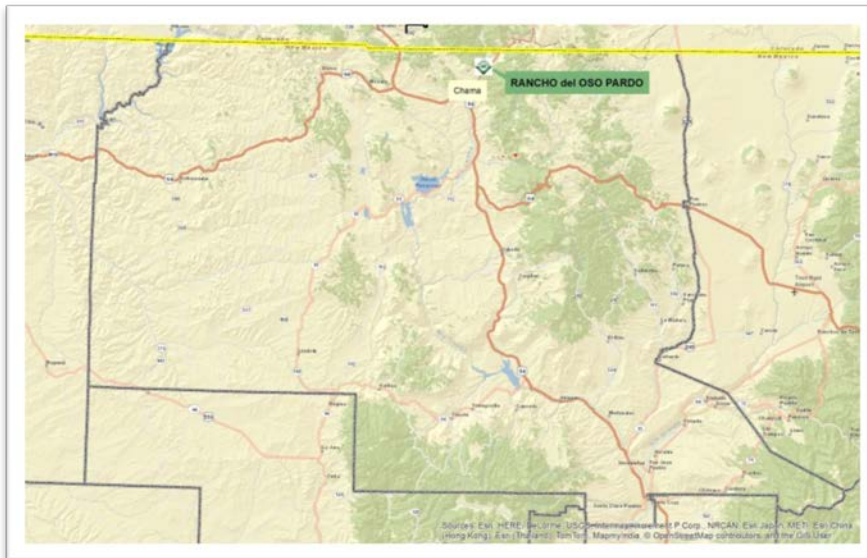


Please RSVP by ***FRIDAY August 31, 2018***

so, we can get an accurate head count for lunches and to ensure that we have sufficient transportation available.

Contact Jose Carrillo, Chama District Timber Management Officer via e-mail at jose.carrillo@state.nm.us or call (575) 588-7831. The more the merrier, the earlier the better!

Come a day early and ride the Cumbres and Toltec Scenic Railroad and see the fall colors of Northern New Mexico and Southern Colorado. www.cumbrestoltec.com or call 1-888-286-2737.

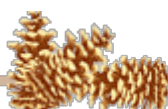


From the south: Take U.S. Highway 84/285 north from Santa Fe, continue to Espanola, and take a left on Paseo de Oñate (84/285). Travel 80 miles north of Espanola along U.S. 84; continue north on NM 17 through Chama for 6.7 miles from the junction (Giant gas station). Gate will be on the left.

From the east: From Taos, NM take U.S. 64 to Tierra Amarilla (80 miles), take a right to go north on what is now U.S. 64/84 to Chama (14 miles), continue north on NM 17 through Chama for 6.7 miles from the junction (Giant gas station). Gate will be on the left.



From the west: From Farmington take U.S. 64 east for 111 miles, take a right at the junction and continue north on NM 17 through Chama for 6.7 miles from the junction (Giant gas station). Gate will be on the left.



1) BUY, SELL OR TRADE

Are you looking for forestry related equipment to buy (i.e. chipper, splitter, chainsaw, etc.)? Or, do you own forestry related equipment you would like to sell or trade? Forestry related equipment only, please, no homes or land. We would like to help you make the connection with other New Mexico Tree Farmers. Provide us with a description of the equipment, price, photo and contact information and we will post it in the New Mexico Tree Farm Bulletin. If you would like us to help you make the connection, please provide information to Arnie Friedt at arnie.friedt@state.nm.us

2) COMMUNITY CORNER

If your community is having a forestry related public event let us know the details and we would be delighted to promote your event in the New Mexico Tree Farm Bulletin. Give us the event details, Who, What, Where and When with contact information and we will include in our monthly bulletin. If you would like us to help you promote your event, please provide information to Arnie Friedt at arnie.friedt@state.nm.us

3) E-MAIL INSTEAD OF SNAIL MAIL

Would you prefer to receive your Tree Farm Bulletin by e-mail instead of snail mail? If so, contact Doug Boykin at doug.boykin@state.nm.us and provide him with your contact information. By receiving your Tree Farm Bulletin by e-mail our operating costs are reduced. Thank you for considering this option.

4) FROM THE CHAIR – THANK YOU

My term as Chair is coming to an end. The list of people I want to thank is quite long and distinguished. I will always be grateful to my colleagues on the committee, the New Mexico Tree Farm membership, the fine folks from State Forestry and the American Forest Foundation, and everyone affiliated with promoting the family tree farm experience. I wish to thank the tree farmers from around the country that I have met at the annual National Leadership Conference. They have generously shared their walks of life. I will always treasure the unique and priceless experience of being able to serve as chair. I especially wish to thank my wife, Debi and my parents, Fred and Rose Silva for their encouragement throughout the decades.

In closing, the committee elections will be held at our next meeting. I can guarantee from personal experience, this is one opportunity in life you do not want to miss!

Matthew Silva

5) RESCHEDULED COMMITTEE MEETING AND COMMITTEE ELECTION!

Out-of-towners! It is on a Friday!!!

Unfortunately, the NM Tree Farm Committee was unable to conduct their 2nd annual meeting and election on August 10th, 2018 due to unforeseen circumstances. Instead, all Tree Farmers are invited and encouraged to attend our rescheduled 2nd New Mexico Tree Farm Committee Meeting of the year (three held annually). ***In addition to our usual agenda, we will be electing members for the positions of Chair, Vice Chair, Secretary, and Treasurer.*** Please join us at 10:00 am on Friday, September 14th, 2018 at the New Mexico Department of Game and Fish office located at 3841 Midway Place NE, Albuquerque, NM. Come out and hear what other tree farmers have been up to and share your tree farm accomplishments with the group. We look forward to visiting with you. If you have any questions, please contact Arnie Friedt at arnie.friedt@state.nm.us

