



Joseph M. Stehling Jr.

Chairman,
NM Tree Farm Committee

HC 70 Box 109
Ocate, NM 87734

(575)-377-0546

joestehling@earthlink.net

www.nmtreefarmers.org

May 2014

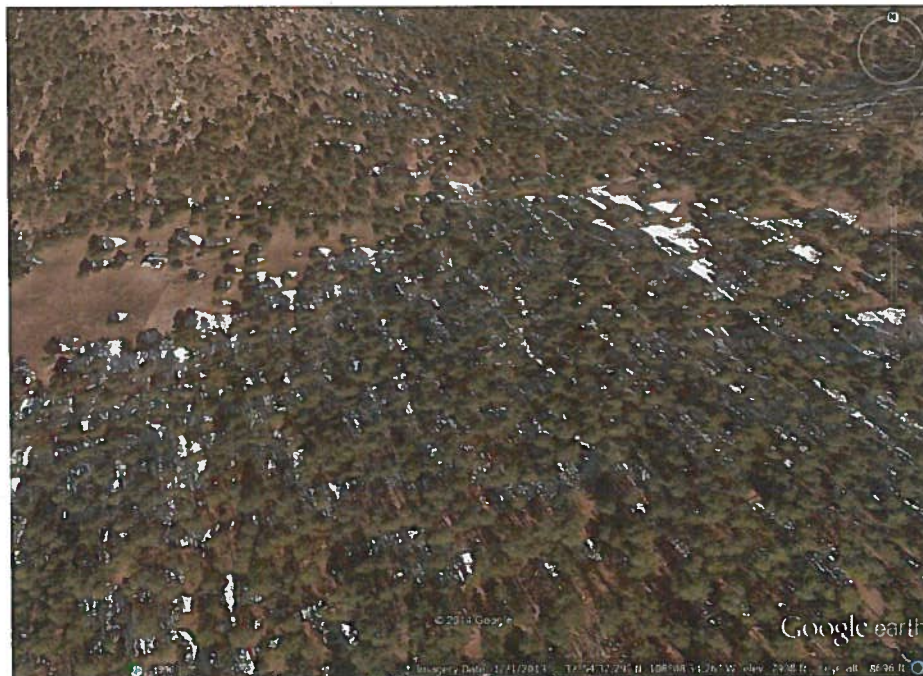


TREE FARM BULLETIN

As we enter another critical fire season, we are always finding new ways to say "Prevent Forest Fires" and protect your homes and structures. So, here is a new one for 2014:

"If you can't find your house on Google Earth, don't expect firefighters to find it."

Many of you have played with and learned to use the Google Earth software. For all kinds of natural resource work, it is an amazing tool, and for initial attack firefighting forces both on the ground and in the air, being able to see it from the air on your laptop computer, smart phone or other device maybe the difference between it surviving a forest fire or not.



The first thing most landowners look for when they first discover Google Earth is the location of their home. So being that they have a clue where to look, they can usually find it. That's not the same for fire suppression resources, who don't know where to look, so they probably will not see it. In the photo to the left, taken using Google Earth, can you pick the homes out? How many homes can you find?



Actually, there are four homes in this picture, one is easy to see in the meadow to the left, but the other three are totally overtopped by Ponderosa Pine Canopy. If you have never visited Google Earth before, give it a try at www.google.com/earth/

**“If you can’t find your house on Google Earth, don’t expect firefighters to find it.”
“Please thin the forest around your home!”**

*Doug Boykin, Advisor
NM Tree Farm Committee*



FROM THE CHAIRMAN:

Many thanks to Sid and Cheryl Goodloe for hosting a wonderful field day on a gorgeous Saturday on 10 May. We had a great turnout of 24 tree farmers, foresters, and friends. The assembled group took an exciting ride in the bed of pickups to tour part of Sid and Cheryl’s Tree Farm where Sid described the prescriptions and work they have done and showed a good comparison to adjacent National Forest land where no work had been done. Following the tour Jose Varela Lopez of the New Mexico Forestry Industries Association gave a talk on forest industries and the work they are doing to help the forest industry be more competitive. Deb Allen-Reid gave a very informative talk on insect pests. Following a short program on grants, management plans, taking a “walk in your woods” and a great bar-b-que lunch, we visited the Goodloe’s ranch home which has a drop-dead view of the valley and was completely built in 1956 with timber from their land. The field day ended with another short tour of a section of the Tree Farm adjacent to the house. My thanks to Lynn Lovelace and Frank Silva of the New Mexico State Forestry, Capitan District Office for their hard work in coordinating all aspects of the field day. We are planning another field day in mid-October at Mathew Silva’s tree farm to honor him and his wife as Tree Farmers of the Year.



- We are still in need of a committee secretary. I am asking someone to step up to the task.
- If you have any questions about our program you would like addressed, please let me know.
- Put 16 - 19 July on your calendar for the National Tree Farm Convention in Pittsburg. It is a fun event with about 200 attendees from about 40 states. If you’re interested in attending please let me know.

