

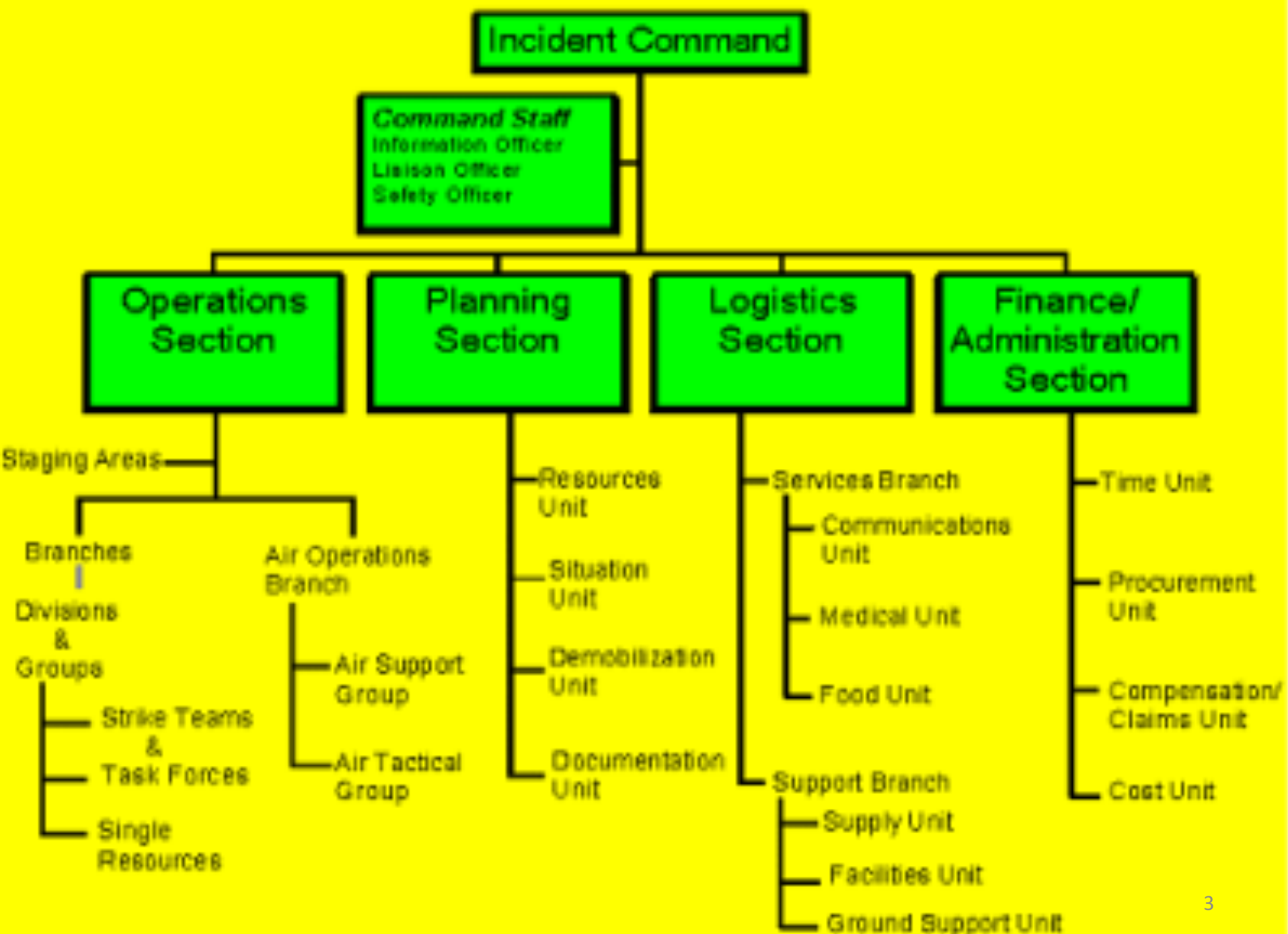
ORGANIZING LANDOWNER FIELD DAYS

**Saloom Properties** LLC

National Outstanding Tree Farm

CRITERIA FOR SUCCESSFUL FIELD DAY

- ORGANIZATION
- MULTIPLE AGENCIES/GROUPS



OPERATIONS SECTION



Maps

Large Map of all routes and station stops



List of Personnel

Incident Commander:

Steve Lloyd

Benji Elmore – Assistant/Floater

<u>Trailer Drivers</u>	<u>Trailer Leaders</u>	<u>Law Enforcement</u>
Ben Crane	Beau Brodbeck (ACES)	Tony Chandler
Woody Jackson	Paul Hudgins	Jim Wade
Steve Perdue	Mike Older	Donnie Parker
David Kelley	Jeremy Lowery	<u>Floaters</u>
Shannon Hollinger	Steve Smith	Roy Maye
Richard Johnson	Jason Gillikin	Benji Elmore
		Johnny Kline
		Thomas Davis (Conecuh Planning Committee)
<u>AFC Vendor Table</u>		<u>Parking</u>
Pam Bradley		Eddie Wilson
Stephanie Gapud		Ben Crane

PLANNING SECTION



Table of Content

IAP

- Objectives 3
- Medical Plan 4
- Health & Safety Messages 4
- List of Personnel 5
- Personnel Contact Information 6
- List of Job Duties 7
- Itineraries8
- Station Descriptions & Station Leaders9
- Maps14-17

Wildlife Management & Longleaf Restoration Field Day Objectives

Date:

- April 22, 2010

Operational Period:

- 8:00 a.m.-3:00 p.m.

General Objectives:

- Provide a safe and enjoyable, informative day learning about the longleaf pine ecosystem and a synergistic wildlife component concentrating on wild turkey, deer, quail management.
- Will actively engage state and county resource agencies in working together for a common goal.
- Will provide useful information about wildlife and longleaf timber restoration and management
- Will present a harmonious fun-filled family atmosphere for all participants
- Will create an attitude that by working together we can make a positive difference in our county and state.

Weather Forecast For Period:

Weather Forecast For Period:

ALZ054>056-059-201900-
WILCOX-MONROE-CONECUH-ESCAMBIA-
559 AM CDT TUE APR 20 2010

	TODAY	TONIGHT	WED
CLOUD COVER	MCLDY	PCLDY	CLEAR
CHANCE PRECIP (%)	20	0	0
PRECIP TYPE	TSTMS	NONE	NONE
TEMP	77	46	80
RH %	39	95	28
20FT WND MPH (AM)	NW 1-5		NE 1-5
20FT WND MPH (PM)	W 2-6	LGT/VAR	SW 2-6
PRECIP AMOUNTS	0.06	0.00	0.00
PRECIP BEGINS	7 AM		
PRECIP ENDS	7 PM		
PRECIP DURATION	1		
MIXING HGT (FT-AGL)	6600	300	7200
TRANSPORT WND (MPH)	SW 10	NW 2	W 8
DISPERSION INDEX	44	1	71
MAX LAVORI		7	
STABILITY CLASS	B	F	B

.EXTENDED...

.WEDNESDAY NIGHT...MOSTLY CLEAR. LOWS IN THE UPPER 40S. WEST WINDS AROUND 5 MPH SHIFTING TO THE NORTHEAST AFTER MIDNIGHT.

.THURSDAY...SUNNY. HIGHS IN THE LOWER 80S. SOUTH WINDS 5 TO 10 MPH.

.THURSDAY NIGHT...MOSTLY CLEAR. LOWS IN THE MID 50S. SOUTH WINDS 5 TO 10 MPH.

Station Leaders:

Victor Howell & Madeline Hildreth

Luke Lewis (NWTF) & Detra Boutwell (NRCS)

Steve Barnett (DCNR) & Alex Boldog

Salem Saloom (Landowner, Planning Committee) & Mark Hains (Longleaf Alliance)

Gary Cole & Ryan Holland

Medical Plan

Ambulance Service:

- Will be on site at main farm

Medical Emergency Procedure:

- Call 911 and notify the Incident Commander-Steve Lloyd and Salem Saloom

Health & Safety Messages

- **SAFETY** starts with **YOU**

Major Hazards and Risks:

- Communication
- Walking
- Hydration
- Driving
- Stinging insects

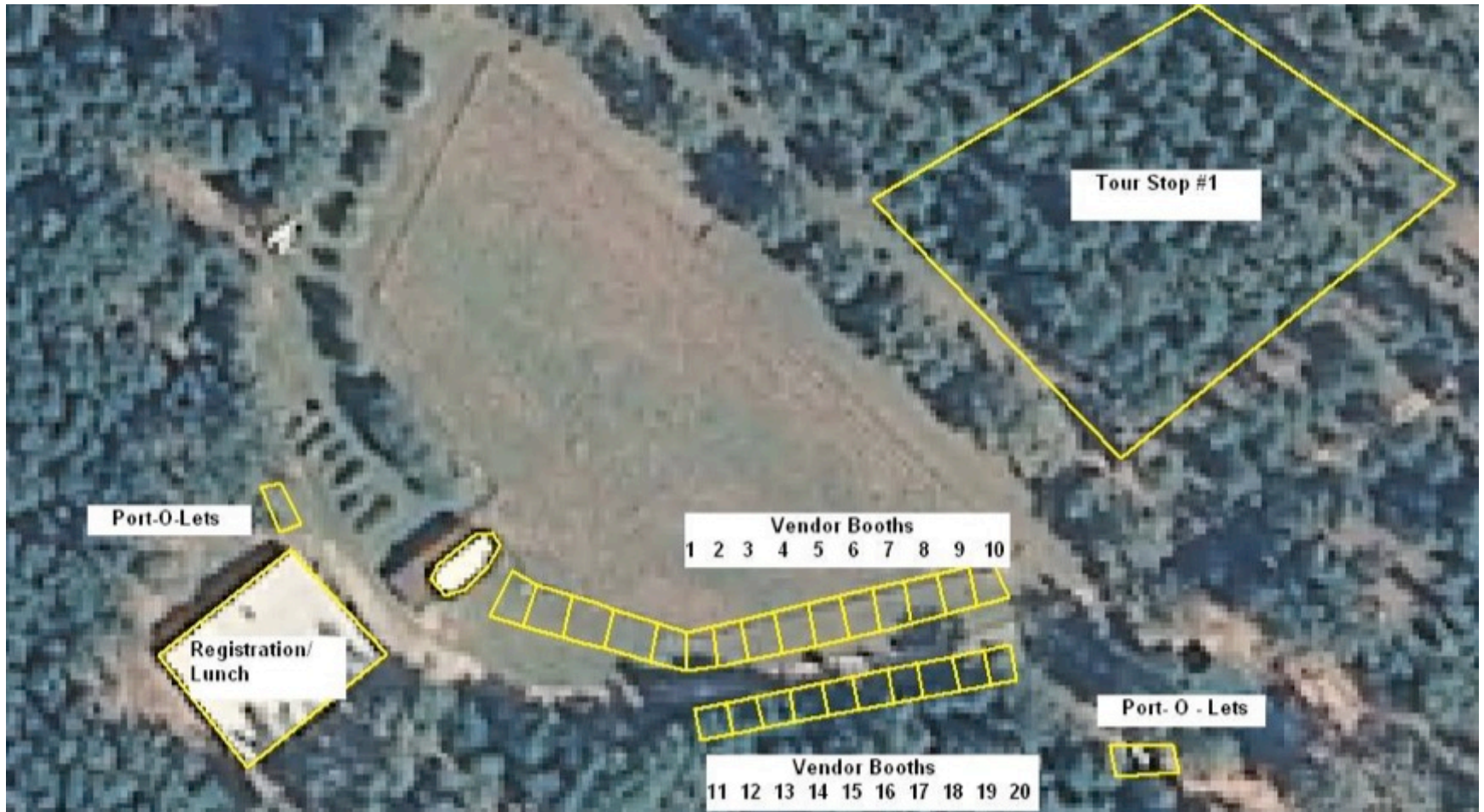
Orders of the Day:

- **Communication:** Get clear instruction on activities for the day, copy of action plan, groups stay together / let someone know if you leave your group.
- **Climbing / Walking:** Be careful when loading or unloading trailers
- **Hydration:** Drink plenty of water.
- **Driving:** Everyone drive defensively; take your time and no speeding.
- No vehicles from vendors to shop/barn area—only atv's/mules
- **Stinging insects:** Be on the look-out for fire ant mounds. Avoid these potential areas and let others know.

VENDOR LIST

1. Alabama Ag Credit (formerly Federal Land Bank of Alabama)	2. Alabama Forestry Commission (AFC)
3. Alabama Forestry Association (AFA)	4. NRCS
5. Alabama Treasure Forest Association (ATFA)	6. Farm Service Agency (FSA)
7. Tenex	8. UAP/Crop Production Services
9. Ala-Tom Resource Conservation & Development Council	10. Meeks Nursery
11. Blanton Nursery	12. Mikes Mounts
13. Larry Fail Turkey Calls	14. Hunt Comfort
15. Longleaf Alliance	16. Phil Freeman game calls and writing pens
17. Alabama Wildlife and Freshwater Fisheries (Outdoor Alabama)	18. Hilliary Harper Turkey Calls
19. Discovering Alabama	20. Cogon-X
21. Travis Consulting Forest	22. First South Farm Credit

Map of Main Farm with Vendor numbers and portolets, main shop





Registration/
Lunch

Tour Stop #1
"Main Farm"

Tour Stop #2
"Road Patch"



Tour Stop #3
"Turkey Track"

Tour Stop #5
"Gravel"

Tour Stop #4
"Iron Gate"

LOGISTICS SECTION



Hospitality	Cooks	Servers
Emily Brogden - ACES	Mike Guillott	Dianne Saloom
Harriet Hyde	Jess Martin	Emily Brogden
Cheryl Nielsen – ACES	Ed Boyd	Harriet Hyde
Debbie Beverly – ACES	Joe Smith	Nell Stuart
Jennifer Stanley – FSA	George Hendrix	Karen Jackson
Karen Jackson - ACES	David Cook	Pam Bradley
		Shirley Elliott
		Martha Dismukes
		Grace Stinson

Support Personnel

Bridget Cain – Conecuh Soil and Water District	Mike Colquitt – Monroe WTF
Daren Bosarge - Conecuh Soil and Water District	Michael Lambert – Conecuh EMS
Shannon Hall-Jones – Monroe Soil and Water District	Jimmy Saloom
Steve Brown – ACES	Karen Saloom
Tim Albritton – NRCS	James North
Reuben Hyde - NRCS	Don Stinson
Levi Boutwell – NRCS Earthteam Volunt	Thomas Davis



Wildlife Management and Longleaf Restoration Field Day

Saloom Properties, LLC

April 22, 2010

8:00-8:45—Registration

8:45-9:00—Welcome

9:00-9:15— Group #1 walk to tour stop
Group #2 load trailer for tour stop
Groups #3, # 4, #5 load buses for tour stops
Group # 6 to vendors

9:30-12:30—Educational tours begin

Period #1—9:30-9:50

Period #2—10:00-10:20

Period #3—10:30-10:50

Period#4—11:00-11:20

Period #5—11:30-11:50

Period #6—12:00-12:20

12:30-1:30—Lunch and program (see reverse side)

1:30-3:00—Vendors, visiting and socializing

3:00—Depart

Educational Tour Stop Station Names

Station #1	Main Farm
Station #2	Road Patch
Station #3	Turkey Track
Station #4	Iron Gate
Station #5	Gravel
Station #6	Vendors



Luncheon Program

Blessing

Lunch

Recognition

Speakers:

Mrs. Linda Casey—State Forester--“Selling Your Timber”

Mr. Corky Pugh--Director of the Division of Wildlife and Fresh Water
Fisheries—“The Role of Hunter/Landowner’s in Natural
Resources Stewardship”

Mr. Robert Schaffeld—Transmission Planning and Operations VP Southern
Company—“The Power of Partnerships”

Mr. Luke Lewis—NWTF Regional Biologist—“Wild Turkeys in Longleaf”

Acknowledgment of Sponsors

Acknowledgment of Vendors

Presentation of Awards

Drawings for Door Prizes

CFE certificates available

**With great appreciation
we are honored to have
the following
Vendors:**

Alabama Ag Credit (formerly Federal Land Bank of Alabama)

[Alabama Forestry Commission \(AFC\)](#)

[Alabama Forestry Association \(AFA\)](#)

[Natural Resources Conservation Service](#)

[Alabama Treasure Forest Association \(ATFA\)](#)

[Farm Service Agency \(FSA\)](#)

Tenax

UAP/Crop Production Services

Ala-Tom Resource Conservation & Development Council (Ala-Tom RC&D)

including SW Ala. Tourism and Film Office

Meeks Nursery

Blanton Nursery

Mike's Mounts

Larry Fail Turkey Calls

Hunt Comfort

[Longleaf Alliance](#)

Phil Freeman game calls and writing pens

[Alabama Wildlife and Fresh Water Fisheries Division
\(Outdoor Alabama\)](#)

Hillary Harper Turkey Calls

Discovering Alabama

Cogon-X

Travis Consulting Forest

First South Farm Credit

[Pepsi Cola](#)

Participating Groups and Agencies

Southern Company
 National Wild Turkey Federation (NWTf)
 National Fish and Wildlife Foundation
 Alabama Forest Commission (AFC)—Conecuh, Monroe, Covington, Escambia, Butler
 Alabama Forestry Association (AFA)
 Tree Farm
 Alabama Department of Conservation & Natural Resources (ADCNR)
 Alabama Cooperative Extension System
 Alabama Dept. of Wildlife and Fisheries
 Alabama Farmers Federation (ALFA)
 Alabama Treasure Forest Association (ATFA)



Alabama Forest Owners' Association, Inc.
 Advocate for the Forest Owner

List of Duties

Site Managers:/Trailer Leaders:

- **Be at your site by _____ a.m. the morning of the field trip**
- **Make sure everything set up:**
 - **Water at stations**
 - **Cups for water**
 - **Waste receptacle**
 - **Easel and poster in place and secure**
- **Point trailer to correct unloading location**
- **Greet participants and assist in unloading**
- **Make sure trailers get pointed in correct direction or turned around**
- **Offer water to participants**
- **Make sure groups stay ON TIME!!!!**
- **Prior to event make sure have water and ice in igloo for your station**
- **Pick up easels and posters and return to shop at end of tour stops**
- **All garbage to be bagged and brought to shop**

Drivers:

- Do not speed—no more than 10-15 mph
- Make sure you know route
- Assist participants in unloading
- Offer water at station stop
- Make sure that trailers get turned around correctly
- Stay in communication with your follower
- At China Road Gate be sure that communicate with Site manager/Trailer leader ahead before coming into gate to be sure no other trailer coming out

Station Leaders:

- Make sure your station is ready for groups
- Be sure that you are familiar with the major bullets of the site you are responsible
- Be aware of the time
- Make sure that you coordinate your time with your partner

Support Service Personnel:

- Assist the Site Managers/Trailer Leaders in whatever capacity they might need
- Be driving the ATV/Mule and distributing water

Station Descriptions & Station Speakers:

Stop I- Main farm Speakers: Victor Howell & Madeline Hildreth

- Loblolly planted 1985 with history
- Thinned 1995, 2001, and Hurricane Ivan salvage thinning 2005
- Dormant season burn Feb. 2006
- Growing season burn 6/16/2008
- Growing season burn 5/20/09—28 acres
- Fallow disking results
- Dormant/winter season burn – February 2010
- Growing/summer season burn results
- Live oaks in tree protectors planted January 2008
- Saw-tooth oaks 23 years old had been in tree protectors
- Perennial crimson clover in barn horse pasture and planted pine food plot
- Area with Chinese chestnuts, crabapple, Asian pears, Gobbler oaks, saw-tooth oaks, blueberries

Photos:

- Fallow Disking
- Drip Torch photo
- Salem Saloom @ entrance sign

Stop 2- Road Patch Speakers: Luke Lewis & Detra Boutwell

- across road from main farm north gate
- 56 acres clear cut after Hurricane Ivan salvage early 2005
- Site-prep: drum chopped and burned
- Machine planted containerized longleaf Jan. 2006 9x10 spacing (535/Ac.)
- Supplemental planting containerized longleaf on middle & north portion 12/07
- Prescribed burn south portion 01/02/2008
- Prescribed burn 2/16/09—56 acres
- Herbicided with Velpar L 3x3 grid of portion of south portion about 10 acres 3/24 & 3/25/09 for laurel oak infestation
- Herbicided with Garlon 4 bark treatment Laurel oak Jan & Feb, 2010
- Regularly treating privet with either Amazapyr/Glyphosate or Garlon bark
- Expanded wildlife opening as result of Ivan damage
- Chickasaw plums planted each edges of food plot
- Gopher tortoises thriving in area
- Herbiciding Cogongrass in portion of plantation
- Turkey Gold chufas planted each year

Photos-

- Gopher Tortoise Burrow (hole)
- Gopher Tortoise (place picture inside Borrow picture, lower left hand corner).
- Picture of food plot
- Cogongrass
- Vista of tour stop (food plot in background)

Stop 3 - Turkey Track **Speakers: Steve Barnett & Alex Boldog**

- planted with containerized longleaf January 2007 & December 2007 with history—site prep herbicide, burned, planted.
- Site prep with 28 oz Chopper + 5 qts Accord + 10 gal H₂O/acre
- 8x12 spacing(435 trees/A) with containerized longleaf
- Food plot preparation
- Chickasaw plums
- Longleaf stand planted 2007 with vista view of surrounding different age tracts
- Bush-hog down about 1 foot the blackberry and dewberry plants and spread 13-13-13 fertilizer
- Notice 160 A 33 year old lob stand thinned Nov 2009-Jan 2010—being managed for 60% pole production—will eventually convert to longleaf after final cutting

Photos:

- 2009 Prescribed Burn
- Landscape Vista of LL plantation- 1 yr. old LL
- 3 year old LL stand
- Deer Stand/ food plot
- Dewberry patch- deer browse

Stop 4- Iron Gate Speakers: Mark Hains & Salem Saloom

- 50 A tract of containerized longleaf planted Feb, 2009
- 10x10 spacing (435/A)
- Area of 30 feet+ on road as wildlife strip
- Site prep herbicide with 12/5% ChopperGen (Amazapyr) + 50% Razor Pro (Glyphosate) + 2.5% Propioionic Acid, burned, and planted 10x10 spacing
- 20 A 1972 loblolly stand
- Thinned after Hurricane Ivan 2004-2005
- Growing Season burn 8/9/2008
- 18 A containerized longleaf planted January, 2006
- Site-prep after clear cut by drum chopping and burning
- Planted 9 x 10 spacing(535 trees/A)
- Survival 450 trees/A Jan, 2007
- Area of cogongrass being treated near gravel to the west
- Prescribed burn 1/20/2009
- Garlon 4 bark treatment of hardwood Feb 2010

Photos:

- 1 year old Loblolly stand
- Road ROW to be cleared and planted
- 4 year old Longleaf stand
- 30 year old Loblolly stand

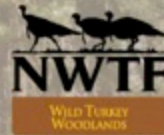
Stop 5 - Near Gravel Speakers: Gary Cole & Ryan Holland

- Junction of 18 A longleaf and 125 A lob stand planted 1996 and 1972 lob plantation
- Prescribed burn 1/3/2008 for first time lob stand
- In longleaf stand note Cogongrass being sprayed past 2 years
- Note lob infiltration will be controlled with burning and may be some mixed longleaf/lob stand in future
- Future Forest Management- 1st thinning at 13-15 yrs. old
- First Thinning- Layout and widen roads to 40 ft.
- Various Log sets/ wildlife openings of approximately 3 acres.
- Wildlife openings- supplemental food plots or native warm season grasses.

Photos:

- 11 year old Loblolly pine stand
- Night burn of 11 year old stand
- Chufa – Spring (green)
- Chufa- Salem Saloom
- Chufa- Luke with nuts and turkey droppings

SALOOM PROPERTIES LLC



STOP 1-MAIN PATCH Victor Howell and Madiline Hildreth, speakers

- Loblolly planted 1985 with history
- Thinned 1995, 2001 and Hurrigan Ivan salvage thinning 2005
- Dormant season burn February 2006
- Growing season burn June 16, 2008
- Growing season burn May 20, 2009 — 28 acres
- Fallow disking results
- Dormant/winter season burn February 2010
- Growing/summer season burn results
- Live oaks in tree protectors planted January 2008
- Sawtooth oaks 23 years old had been in tree protectors
- Perennial crimson clover in barn horse pasture and planted pine food plot
- Area with Chinese chestnuts, crabapple, Asian pears, Gobbler oaks, sawtooth oaks and blueberries.



Mark Your Calendar!

**Wildlife Management and
Longleaf Restoration Field Day**
Saloom Properties, LLC
Conecuh County, Alabama
April 22, 2010
9:00 a.m. – 3:00 p.m.



Expert Speakers Include:

- *National Wild Turkey Federation (NWTF)*
- *Alabama Department of Conservation and Natural Resources*
- *Alabama Forestry Commission*
- *Longleaf Alliance Researchers*

Registration:

8:00 – 9:00 a.m. with coffee and donuts

Pre-Registration:

Conecuh County Extension
Phone: 251-578-2762 Fax: 251-578-4483
E-mail: smellja@aces.edu

Hosted By:

NWTF, Dr. Salem and Dianne Saloom,
and the Conecuh County Forestry
Planning Committee

Lunch Provided: Low Country Boil



Door prizes and free natural resource management information will be available.

*Join the fun! Learn about wild turkeys, longleaf pine
management, and much more!*



NEWS RELEASE

United States Department of Agriculture • Natural Resources Conservation Service • P.O. Box 311
Auburn, AL 36831 • Phone: (334) 887-4581 • Web: <http://www.al.nrcs.usda.gov>

**Contact: Julie B. Yates, Director, Communications, Marketing, and Outreach, (334) 887-4581
Beau Brodbeck, Extension Specialist: Urban & Community Forestry, (251) 937-7176**

Wildlife Management and Longleaf Restoration Field Day in Conecuh County

AUBURN, Ala, April 5, 2010 – The Natural Resources Conservation Service (NRCS), Conecuh County Soil and Water Conservation District, and Conecuh County Forestry Planning Committee are hosting a wildlife management and longleaf restoration forestry field day at Saloom Properties, Booker's Mill, Alabama on April 22, 2010. The field day will be an excellent opportunity for outdoor enthusiasts including hunters, landowners, and foresters to learn about managing forests for wildlife and timber production. Attendees will enjoy an outdoor experience when touring the 2,000-plus acre Saloom properties via truck drawn trailer.

The tour will feature 6 educational stops hosted by a variety of expert speakers including representatives from the National Wild Turkey Federation, Longleaf Alliance, Alabama Department of Conservation and Natural Resources, Natural Resources Conservation Service, and the Alabama Forestry Commission. The stops will include information on prescribed burning, longleaf establishment and management, managing forests for wildlife enhancement, food plot management, endangered wildlife habitat management, invasive plant control and turkey management. Vendors will be on site with a variety of forest and wildlife management products and services.

In addition to a great field day, attendees will also enjoy a low country boil for lunch. Registration is free; however, participants must preregister by contacting the Conecuh County Extension Office in Evergreen, Alabama at: (251) 578-2762 or email: smellja@aces.edu. Whether you own, lease, manage, or simply enjoy the outdoors join us from 9:00 a.m. to 3:00 p.m. on April 22nd for a fun filled day packed full of practical forest and wildlife management information.

A flyer with directions to the Saloom property is available on the NRCS website at: <http://www.al.nrcs.usda.gov/news/nr/fy10meeting.html>

#

Helping People Help the Land

An Equal Opportunity Provider and Employer

7.24-pounder was the biggest Delta bass he's ever caught. Like so many oth-

on the Tombigbee river — the other side of the upper Delta from the

I think the floods have also had a positive im-

knowing a 5-pounder will be there to inhale it.

Saloom farm to host field day

Staff Report

The Natural Resources Conservation Service, Conecuh County Soil and Water Conservation District and Conecuh County Forestry Planning Committee are hosting a wildlife management and longleaf restoration forestry field day from 9 a.m. to 3 p.m. Thursday at Saloom Properties in Booker's Mill.

The field day will provide an opportunity for outdoor enthusiasts, including hunters, landowners and foresters, to learn about managing forests for wildlife and timber production.

Attendees will enjoy an outdoor experience when touring the

2,000-acre plus Saloom properties by truck-drawn trailer.

The tour will feature six educational stops hosted by a variety of expert speakers, including representatives from the National Wild Turkey Federation, Longleaf Alliance, Alabama Department of Conservation and Natural Resources, Natural Resources Conservation Service and Alabama Forestry Commission.

The stops will include information on prescribed burning, longleaf establishment and management, management of forests for wildlife enhancement, food-plot management, endan-

gered wildlife habitat management, invasive plant control and turkey management.

Vendors will be on site with a variety of forest and wildlife management products and services.

Attendees also will be served a low-country boil for lunch.

Registration is free. Participants must pre-register by contacting the Conecuh County Extension Office in Evergreen at 251-578-2762 or by email <http://www.aces.edu/counties/Conecuh/>. A flyer with directions to the Saloom property is available on the NRCS Web site at www.al.nrcs.usda.gov/news/nr/fy10meeting.html.

FINANCIAL/ADMINISTRATION SECTION



WILDLIFE MANAGEMENT AND LONGLEAF RESTORATION FIELD DAY
 SALOOM PROPERTIES, LLC
 CONECH COUNTY, ALABAMA
 APRIL 22, 2010

NAME	PHONE NUMBER	E-MAIL	HOW DID YOU FIND OUT ABOUT THIS TOUR?
1. Bill Cooper	334 482 9340		MAILING
2. CHARLES CLARK	334-549-3828		FSA
3. Michael R. Skates	334-242-8265	Michael.Skates@dir.Alabama.gov	Al. Forestry Comm
4. Lisa Tindell	251-867-4876	lisa.tindell@BrewtonStandard.com	Brewton Standard
5. Brian Wittwer	334-242-8265	Brian.Wittwer@dir.Alabama.gov	E-MAIL
6. Prof. Schuffeld	205-257-7048	rschuff@southco.com	Southco Company
7. Jim Herod	251 275 2244	jherod@tds.net	Benjie
8. Gail Jones	334. 222. 7624	pgjones@andycade.com	mailing
9. Phillip Jones	"	"	"
10. Bob McCreary	251-578-5539		mailing
11. Astha McCreary			
12. Michael Lambert	251-236-0252	ccems@bellsouth.net	Dr. Saloom invite
13. Brady Gaskin	251-727-1853	Gaskinbrady@yahoo.com	Dr. Saloom invite
14. Danny Baker	" 578 2555		

(13)

LANDOWNER INFO WITH REQUESTS

Last Name	First Name	Address	E-mail	County	Treasure Forest	Tree Farm	Stewardship Forest	# of acres	Would Like Info On	Treasure Forest	Tree Farm	Longleaf Management	Stewardship Forest
Langley	Jack	721 Lafayette St. South, Lafayette, AL 36862		Chambers	Yes	No	No	1600					
Layton	Vivian	109 Davison St		Dallas/Per ry	No	Yes	No	N/A		Yes	No	No	Yes
Lincoln	Sam	5205 Springdale Drive, Milton, FL 32570	sam@pasturesolutions.com	Santa Rosa	No	No	No	200					
Magnum	Elaine	7409 Camale Dr., Pensacola, FL 32504	emagnum@cox.net	Escambia	No	Yes	Yes	160		Yes	Yes	Yes	Yes
Mantel	Larry	4371 Brooklyn Rd, Evergreen		Conecuh	No	No	No	40		No	Yes	Yes	Yes
Mathews	Craig	2809 Churchbell Ct, Mobile, AL 36695	craigm@zebra.net	Conecuh	No	No	No	15		No	Yes	Yes	Yes
McCreavy	Fred	13465 Brooklyn Rd	mccreavyfarm@hotmail.com	Conecuh	No	No	No	500		Yes	Yes	Yes	Yes
McCreavy	Bod	2522 Co. Rd 43		Conecuh	No	No	No	582		Yes	Yes	No	Yes
McGough	Joe	2217 Danielville Rd, Honoreville, AL 36042	jonefarm@alaweb.com	Crenshaw	No	No	No	250		No	No	Yes	No

ESTIMATED BUDGET

- **FOOD**

- Shrimp 200 lbs \$650
- Corn 240 ear \$66
- Onions 8 bags \$32
- Butter 2 lbs \$6
- Lemons 4 bags \$10
- Garlic 50 cloves \$20
- Potatoes 10 bags \$40
- Crab Boil 16 bottles \$40
- Salt 4 shakers \$5
- Pepper 4 shakers \$10
- **Total \$879**

- **PAPER WARE FOR 300**

- Plates 300 \$24
- Cups 16 oz. \$15
- Knives 300 \$15
- Forks 300 \$15
- Spoons 100 \$5
- Napkins 400 \$3
- Cake Plates 200 \$10
- Coffee Cups 150 \$3
- Cups/Water Stations 400 \$10

-

- **Total \$105**

- **Alternate Dish for 50**

- Sausage Dogs \$20
- Buns \$10
- Catsup \$5
- Mustard \$4
- Mayonnaise \$5
- Pickles \$6 **Total \$50**

-

- **DRINKS**

- Tea \$5
- Lemonade \$8
- Coffee \$8
- Creamer \$5
- Sugar \$5
- **Total \$31**

-

- **DESSERT**

- Cakes 10 \$70

-

- **All Total for Food and Supplies \$1135**

- **Buses**

- Fuel Expense - \$72
- Driver Expense - \$110.00
- **Total cost of buses/drivers: \$182.00**

- Submitted by Dr. Saloom

- **Portable Toilets**

- For 6 portable toilets and 3 hand washing stations: \$450.00

- **Miscellaneous Costs**

- Cost for gas for person to deliver shrimp \$100.00
- Cost for propane for gas cookers \$50.00

- **Administrative Costs**

- Postage covered by grant
- Approximate cost for 3 quarter page ads: \$600.00
- TOTAL COST: Without advertising \$1917.00
- With advertising \$2517.00

- This is our best estimate. Most costs are actual, however, the totals may fluctuate a little.

- **MEMORANDUM OF INSURANCE**

DATE OF ISSUE: 04/20/2010

- **PRODUCER:**

- AON RISK SERVICES SOUTH, INC.
- 1111 METROPOLITAN AVENUE, SUITE 400
- CHARLOTTE, NC 28204
- CONTACT: Brenda Rollins
- PHONE: (704) 343-4132

- **COMPANIES AFFORDING COVERAGE**

- COMPANY

- LETTER

- A

- Federal Insurance Company/NAIC #20281

- COMPANY

- LETTER

- B

- **INSURED:**

- **The National Wild Turkey Federation, Inc., The**

- **Chapters of the NWTF**

- PO Box 530

- Edgefield, SC 29824-0530

- COMPANY

- LETTER

- C

- COMPANY

- LETTER

- D

- COMPANY

- LETTER

- E

- **COVERAGES**

- This memorandum verifies that the following coverages are in force: Commercial General Liability, including Liquor Liability, Automobile Liability, Umbrella Liability, Workers' Compensation and Employer's Liability.

- This memorandum is furnished to you as a matter of information for your convenience. It is not intended to reflect all the terms and conditions or exclusions of such policies. This memorandum is not an insurance policy and does not amend, alter, or extend the coverage afforded by the listed policies. The insurance afforded by the listed policy is subject to all the terms, exclusions and conditions of such policies.

