

# **TRAIL CAMERAS**

*Gil Lackey*

**WHAT IS A  
TRAIL CAMERA?**





[www.chasinggame.com](http://www.chasinggame.com)

# HOMEBREW CAMERAS



[JTSWILDLIFECAMERAS.COM](http://JTSWILDLIFECAMERAS.COM)

[jtswildlifecameras@hotmail.com](mailto:jtswildlifecameras@hotmail.com)

## CAMERA TIPS

- Use Rechargeable Batteries
- Have Extra Batteries and SDs
- Close the Door Securely
- Clean Lens Often

## LEVEL CAMERA



# COVER CAMERA



## SET-UP TIPS

- Keep your Flash on in Daylight
- Be Low Impact – Control Scent
- Think “Cover”
- Snip off Branches and Grasses
- Choose Thick Tree Trunk
- Watch Sun Direction
- Match the Height to the Species

## MOVE CAMERAS OFTEN



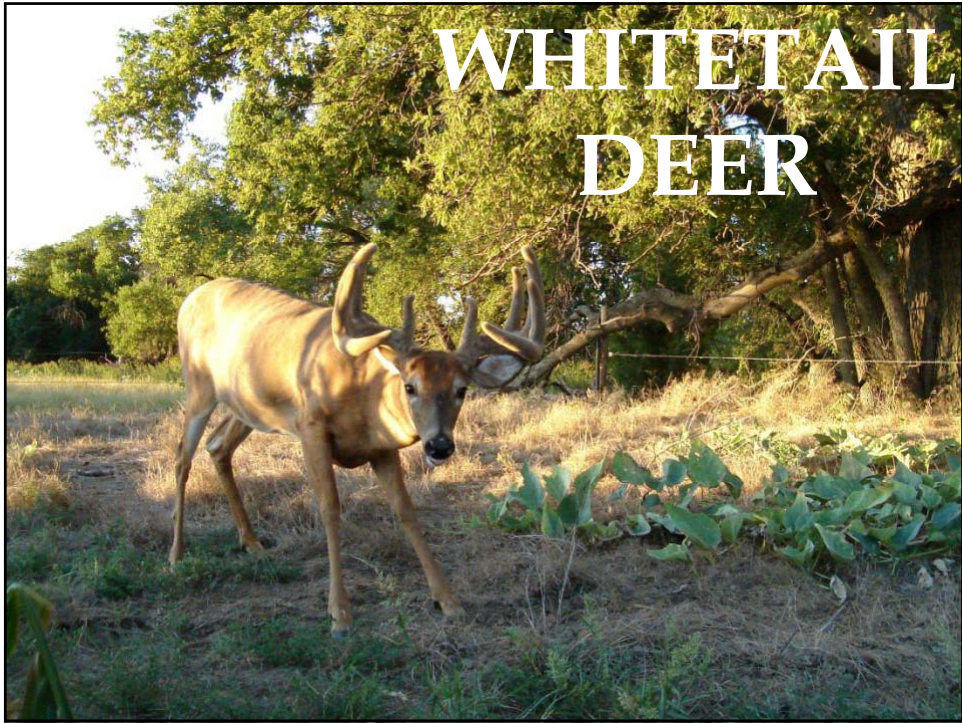
## SECURITY



**BUFFALO STATION HUNT CLUB**  
**NO**  
**TRESPASSING!!**  
**THIS PROPERTY UNDER**  
**VIDEO SURVEILLANCE**  
**TRESPASSERS WILL BE PROSECUTED**

## SECURITY TIPS

- ❑ Use Cable Lock
- ❑ Affix High on Thick Tree
- ❑ Time and Date Stamp
- ❑ No White Flash Cameras

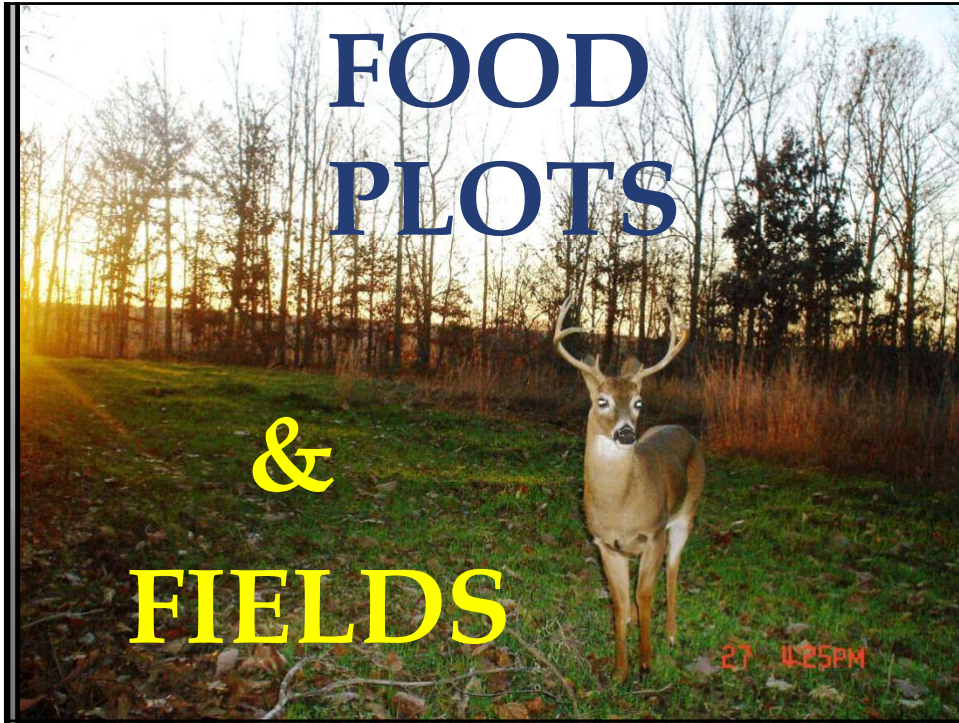


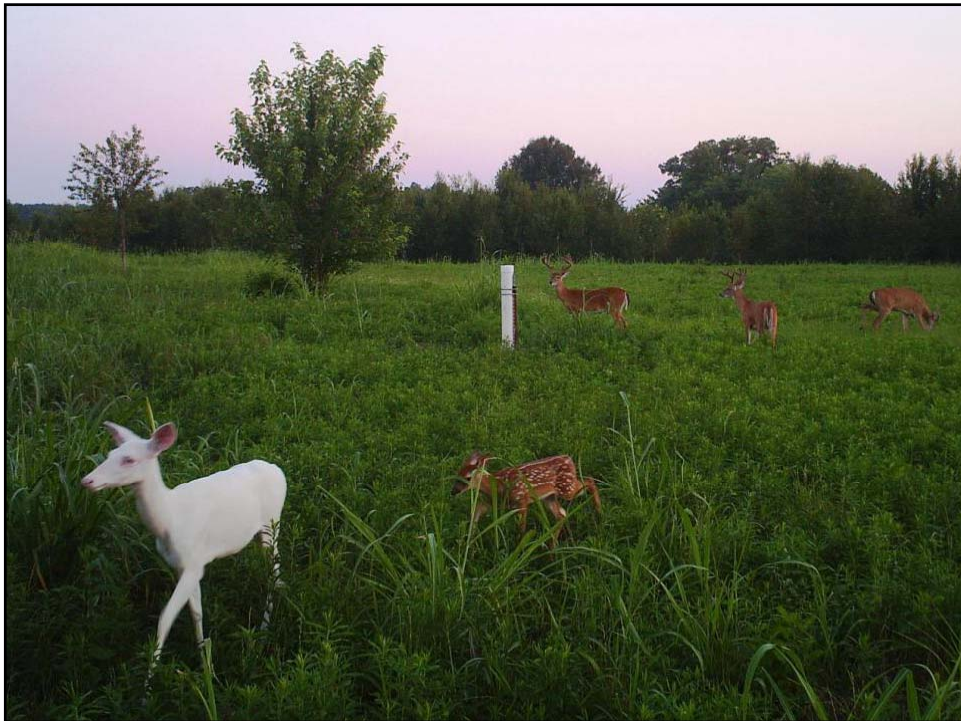
















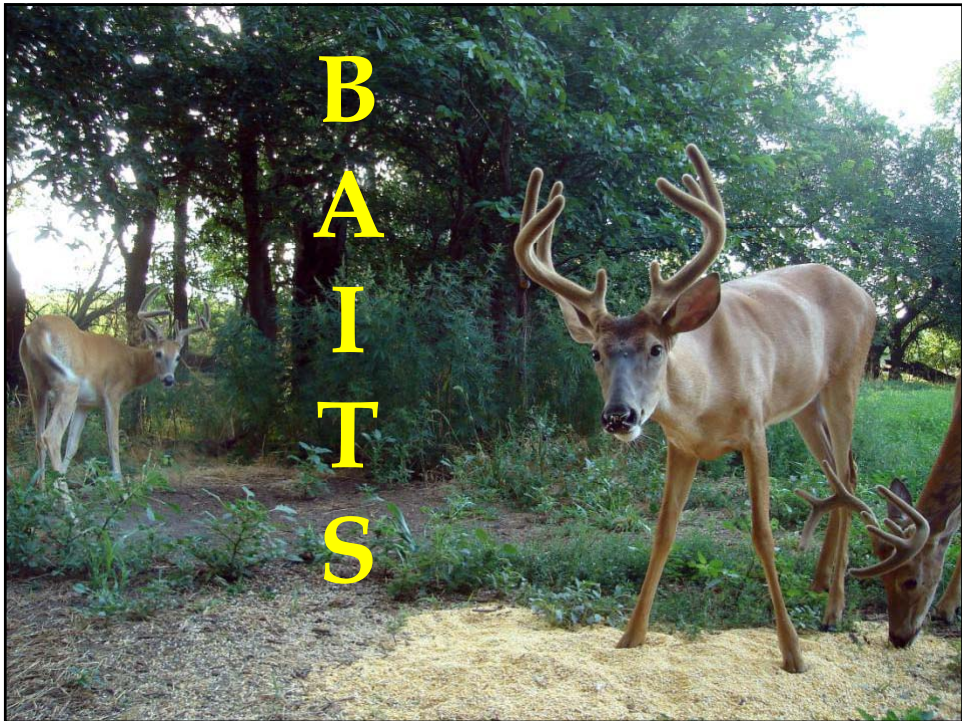
















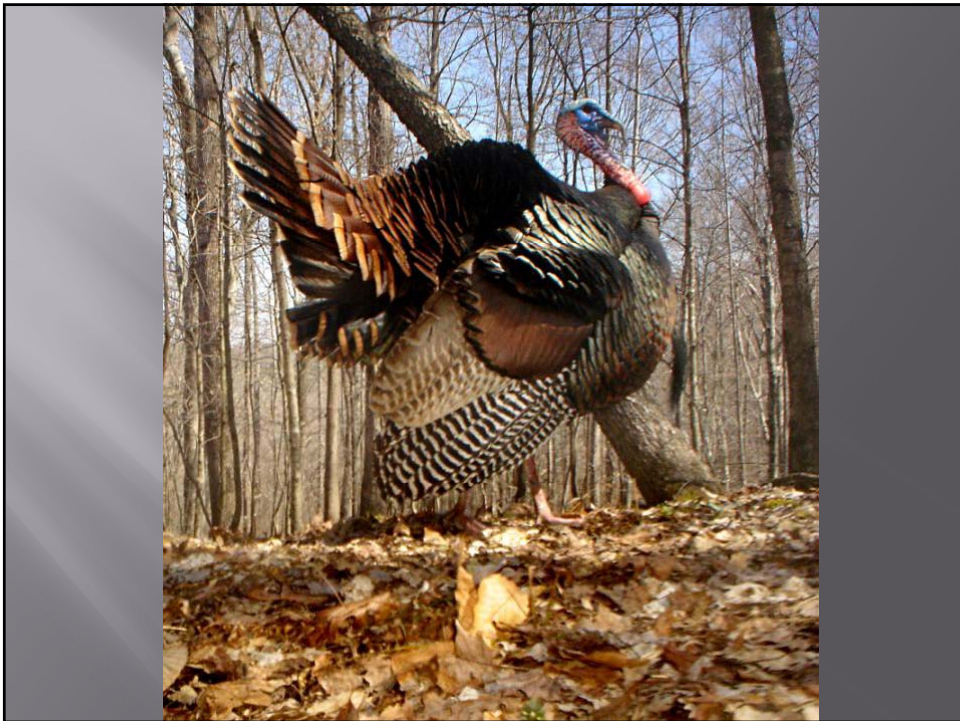


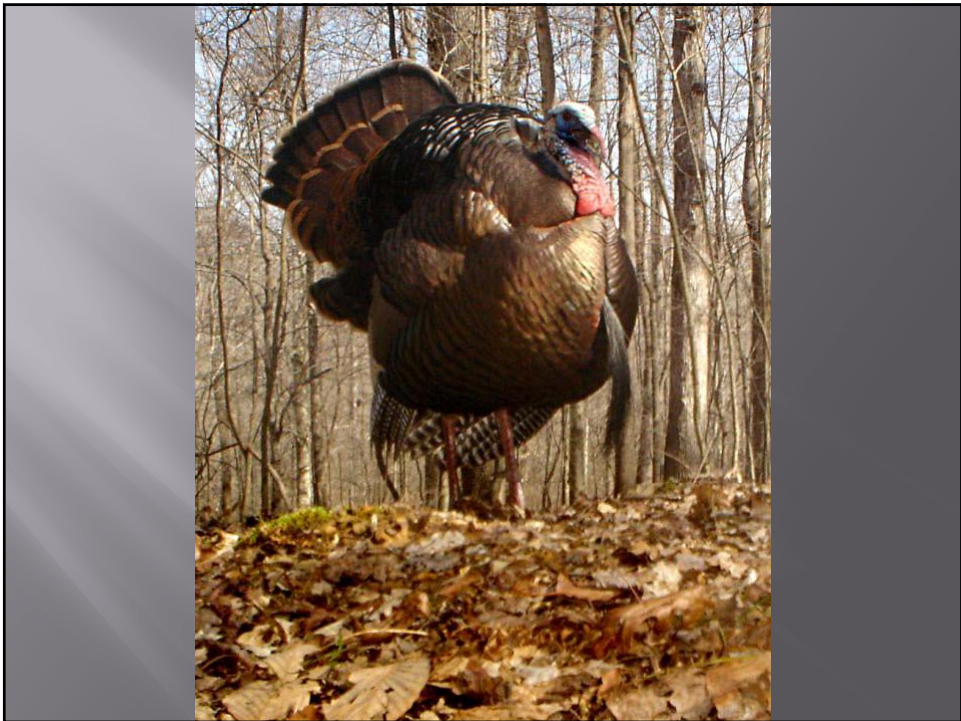




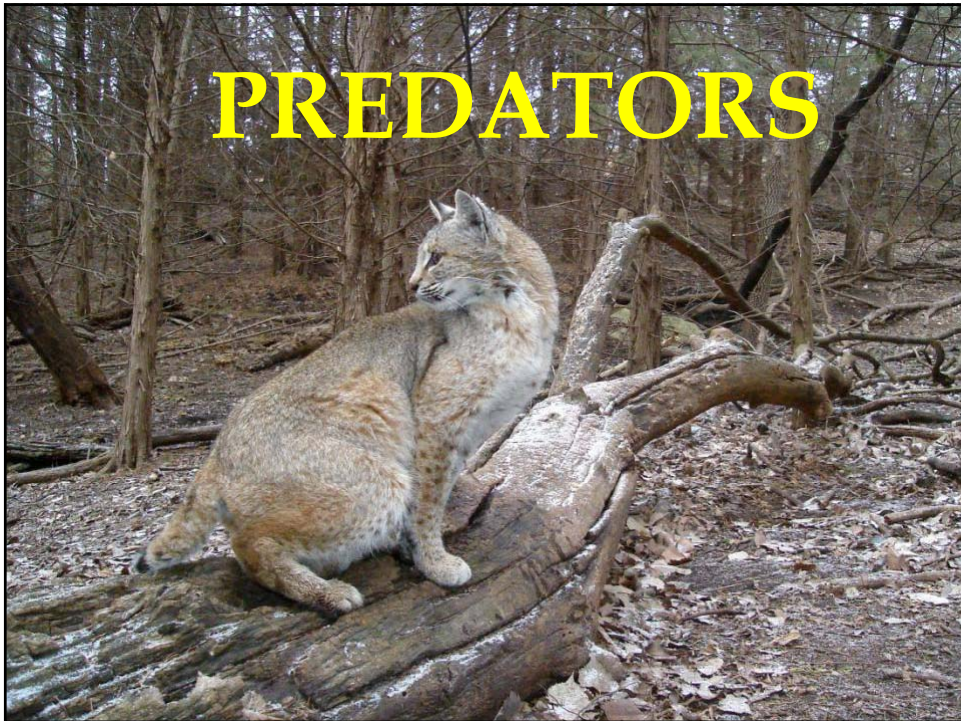












- Fresh or Freezer-Burned Meat
- Butcher or Meat Processor
- Cut Up & Tether Bait
- Bait in Heavy Cover
- Spread Leaves over Bait
- Play Keep-away
- Turn Flash to Low
- Use Scents























- Powder River Cat Call
- Beaver Castor
- [www.minntrapprod.com](http://www.minntrapprod.com)
- Fish















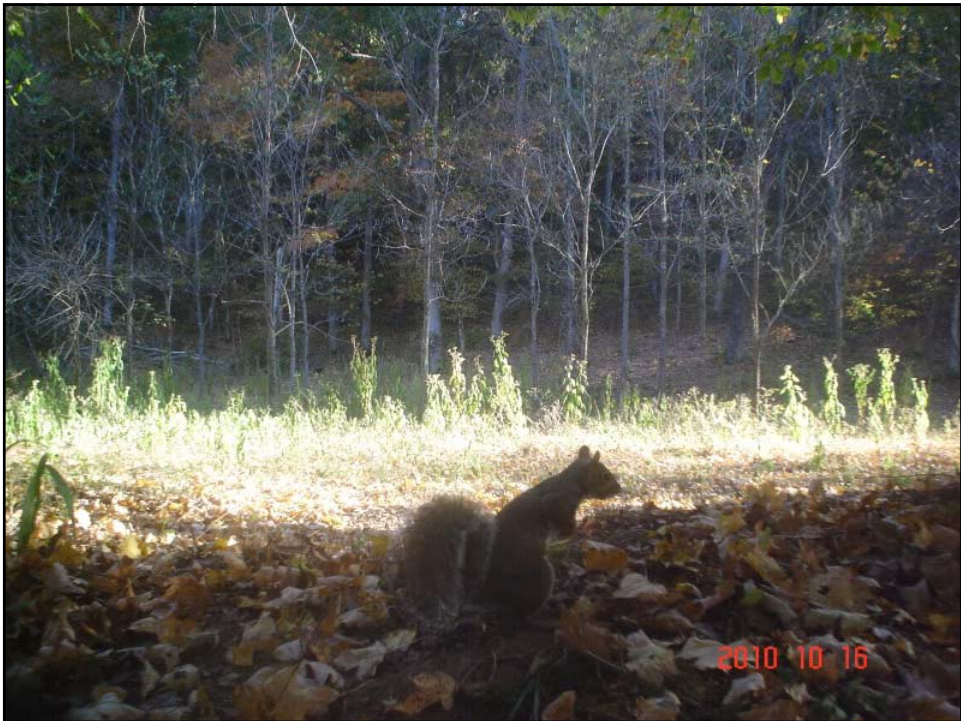








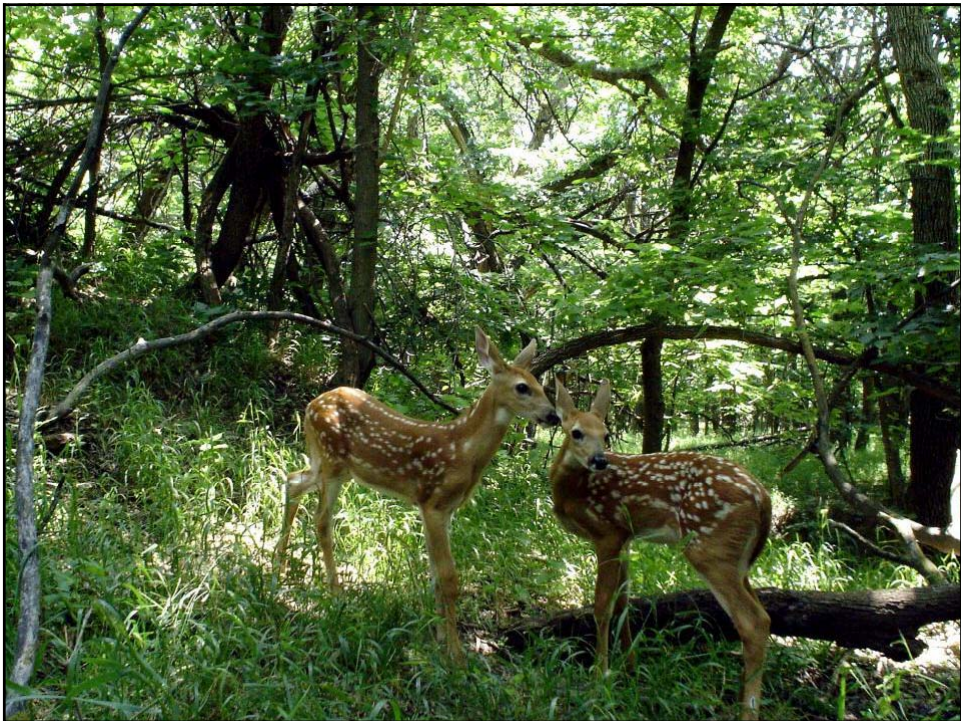










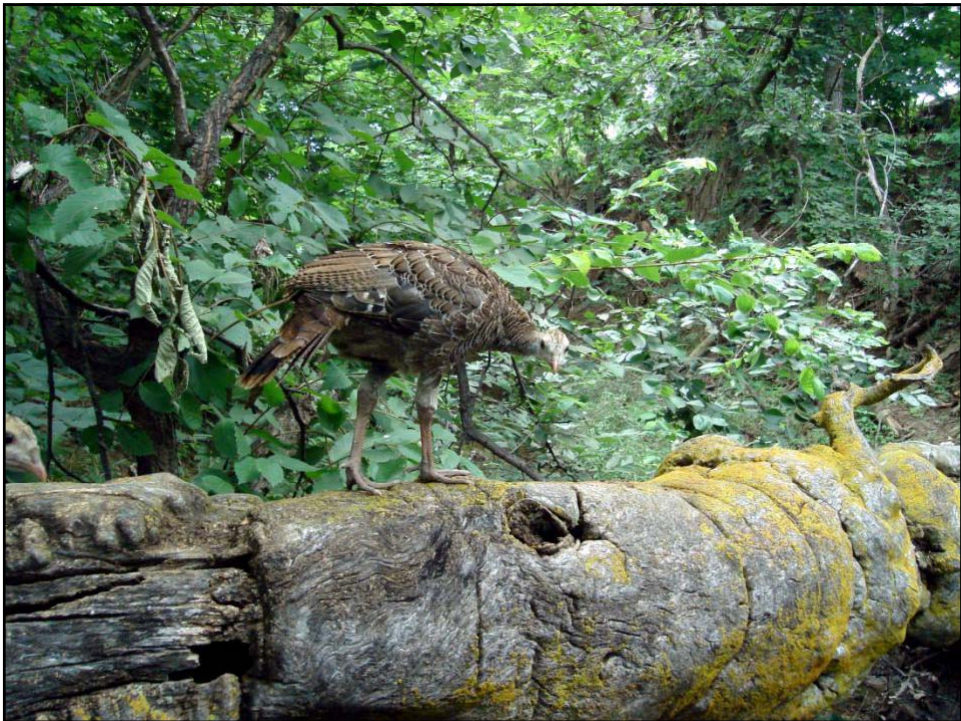






**SAY CHEEEEEEESE!**





























**GIL LACKEY**

**GILLACKEY@BELLSOUTH.NET**