

tree farmer

NOVEMBER/DECEMBER 2005

AMERICAN
FOREST FOUNDATION



AMERICAN
TREE FARM SYSTEM®

The guide to sustaining America's family forests

ALSO IN THIS ISSUE

No Tax Relief in Sight After Hurricanes Katrina & Rita

Tree Farm Status Simplifies an Easement

Lump Sum vs. Pay-as-Cut



2006
Buyer's Guide
& **Resource Directory**

**THE AMERICAN
TREE FARM SYSTEM®**

Tree Farmer is the official magazine of the American Tree Farm System (ATFS), a program of the American Forest Foundation. It is published six times a year for private forest landowners and volunteer foresters. Opinions do not necessarily represent those of ATFS.

MISSION

To promote the growing of renewable forest resources on private lands while protecting environmental benefits and increasing public understanding of all benefits of productive forestry.

Tree Farmer magazine is a forest enhancement publication by Tree Farmers for Tree Farmers and all who benefit from their endeavors. *Tree Farmer* espouses the environmental benefits of sustainable production of forest products through responsible forest stewardship on private forestlands. With information, advocacy, and practical advice, the magazine promotes sustainable forest practices for multiple benefits to society.

STAFF

Editor-In-Chief
Bob Simpson
Editor
Theresa D'Orsi
Executive Editor
Brigitte Johnson, APR
Design
TM Design, Inc.
Printing
Mercury Publishing Services
Published by
The American Forest Foundation
Laurence Wiseman, President

CONTACT US

For subscriptions, address changes, and general information

Tree Farmer Magazine
American Forest Foundation
1111 Nineteenth Street, NW
Suite 780
Washington, D.C. 20036
888.889.4466
info@treefarmssystem.org
www.treefarmssystem.org

SUBSCRIPTIONS

Subscriptions to *Tree Farmer* are \$18 per year, \$32 for two years. Foreign subscriptions are \$25 per year. Single copies are available for \$4.00.

PLEASE WRITE

Tree Farmer welcomes correspondence on editorial matters, letters to the editor, manuscripts, new product announcements and photos for consideration. The publisher reserves the right to accept, reject and/or edit these materials. Proposed editorial material will only be returned if accompanied by a self-addressed, stamped return envelope.

ADVERTISING DIRECTOR

Jim Führer
Mast High Media
834 SW St. Clair Avenue, Suite 106
Portland, OR 97205
Phone: 503.227-1381
Fax: 503.227.1391
Email: jim@masthighmedia.com

©2005 American Forest Foundation (AFF). All rights reserved. Material may not be reproduced without the expressed written permission of AFF.

tree farmer



Features

4 Buyer's Guide and Resource Directory
Our fourth annual guide to a wealth of products and services designed to enhance your good stewardship efforts.

4 BUYER'S GUIDE

- 4 Associations & Organizations
- 4 Certified Group Auditors
- 5 Consulting Foresters & Managers
- 9 Co-op Resources
- 9 Fertilizers, Herbicides & Repellents
- 10 Forest Appraisal, Analysis & Management
- 11 Forest Measuring Instruments & Software
- 11 Insurance
- 13 References & Resources
- 13 Seeds & Seedlings
- 14 Supplies, Gifts & Apparel
- 15 Timber Buyers & Loggers
- 15 Timber Pricing Services
- 15 Tools & Equipment
- 16 Tree Paint & Markers
- 16 Tree Protectors & Shelters
- 17 Wood Manufacturers

18 RESOURCE DIRECTORY

- 18 Agencies, Associations & Organizations
- 22 Grant, Loan & Cost-Share Programs
- 22 Cooperative State Research, Education & Extension Services
- 24 Online Resources
- 24 Publications
- 25 Tree Farm System State Contacts
- 26 State Foresters

30 Tree Farm Status Simplifies Easement Process
Membership in the Tree Farm System facilitates the process of protecting forestland from future land development. Here we explain how to ensure your stewardship goals are followed with a conservation easement — and explore the income opportunities you might still pursue through “ecosystem services.”

35 No Tax Relief in Sight After Hurricanes
Estimated timber losses were over \$5 billion for Katrina alone; Rita will raise the total. While no significant tax relief is in sight, tax expert Bill Hoover outlines the five steps affected Tree Farmers should take to qualify for loss deductions.

38 Lump Sum vs. Pay-as Cut
Compare the returns and risks of the two ways to perform a timber sale.

41 Method Review: Weight and Volume

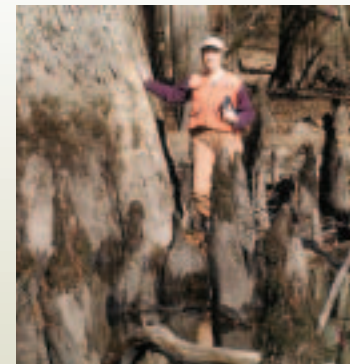
Columns

34 Taxing Issues
Your guide to closing the books on 2005.

48 Careful Cutting
Fertilization techniques can elevate a stand to the next category.



32



42

COVER: PONDEROSA PINE COTYLEDON AT A U.S. FOREST SERVICE NURSERY IN THE NEBRASKA NATIONAL FOREST. THE NURSERY PROVIDES PONDEROSA PINE AND OTHER SPECIES OF SEEDLINGS FOR WINDBREAKS, URBAN PLANTINGS AND FORESTING THE NATIONAL FOREST. PHOTO BY NED THERRIEN