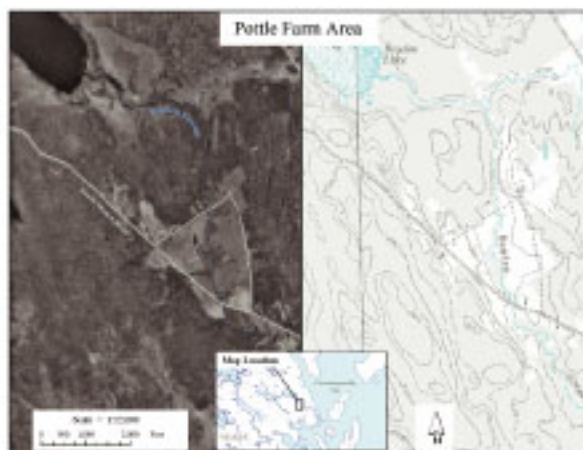


Welcome to the Tree Farm of Jim and Sandra Pottle. This land has been in the Pottle family since 1923. The forest you are about to walk through is the product of more than 79 years of hard work and care by three generations of the Pottle family.



Jim Pottle with an Atlantic salmon caught in Boyd's Lake, 1947

This educational trail explains the role Maine's forests play in determining the health of the rivers that provide habitat for fish like the Atlantic salmon. Healthy forests like this also provide clean water that we drink.



*Shared Streams is a national riparian conservation program of the American Forest Foundation*